

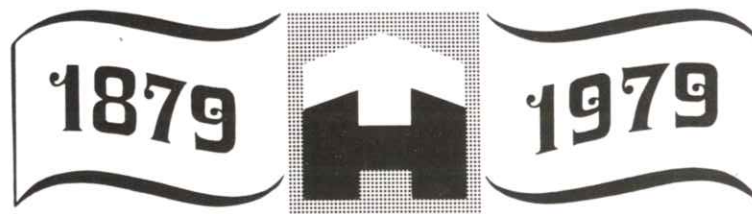
GEO. HOULTON & SONS LTD.



Geo. Houlton & Sons Ltd.

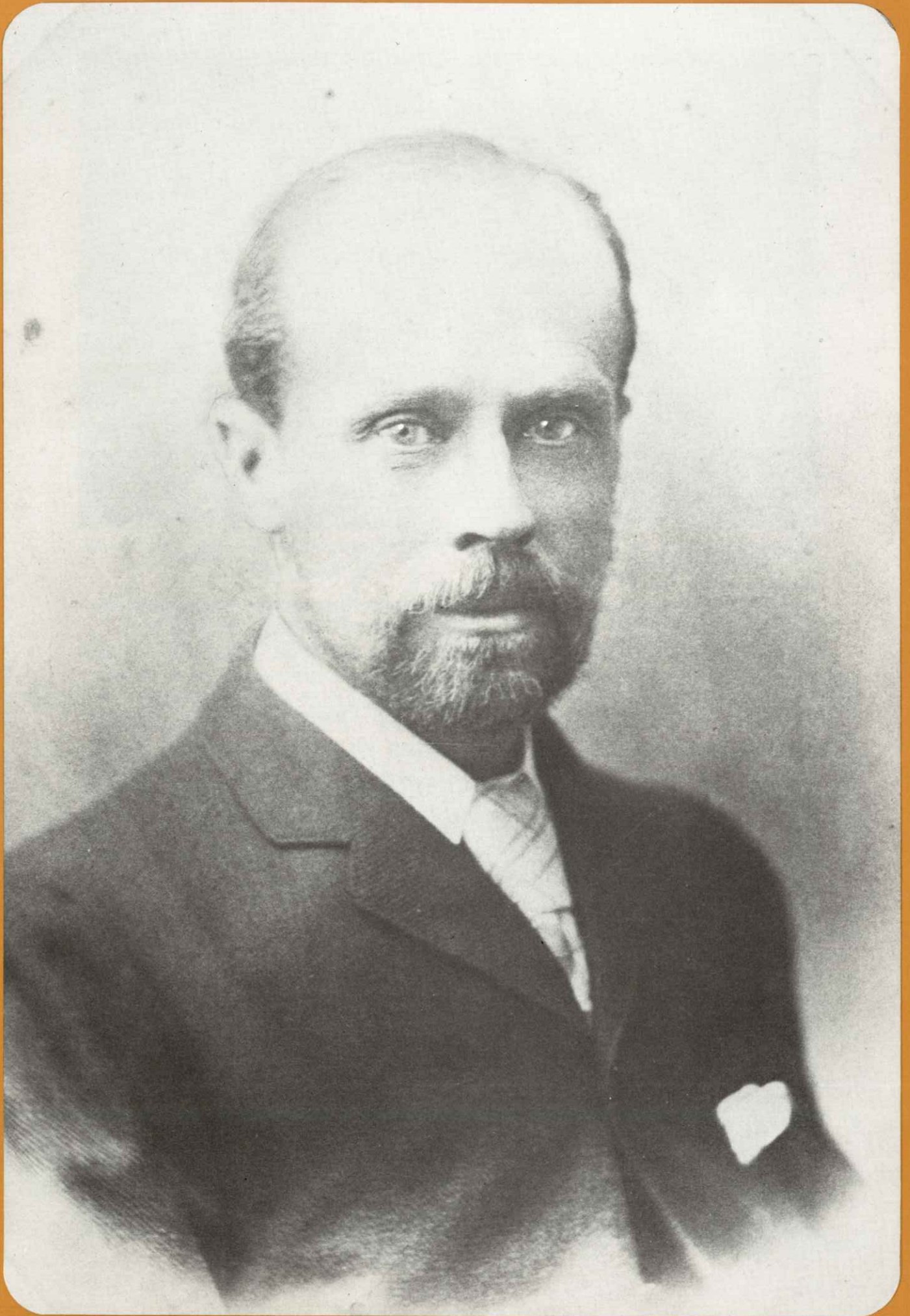
Hyperion Street
HULL

CENTENARY



The passage of a century has been marked by a great development of the business founded by George Houlton in October 1879 and now widely known in the City of Kingston upon Hull and throughout the East Riding as Geo. Houlton & Sons Ltd.

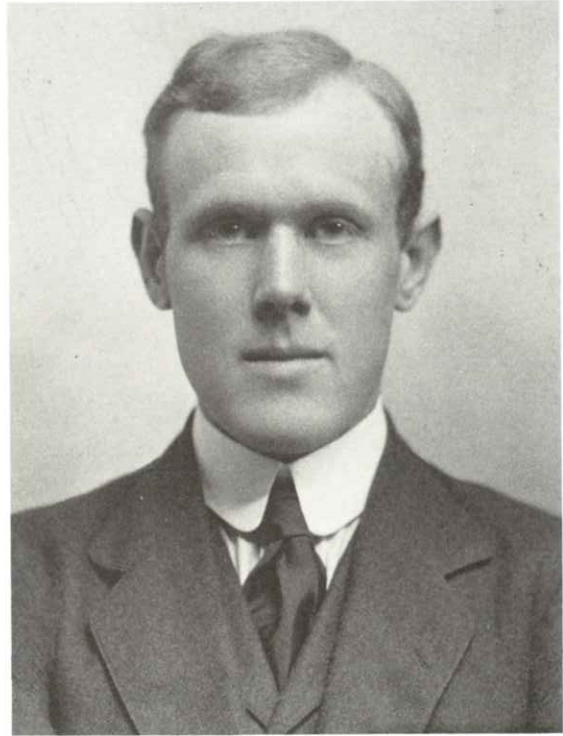
Many well known commercial, industrial and educational landmarks are a visible reminder of the history of this old established building and contracting business.



MR. GEORGE HOULTON — THE FOUNDER



GEORGE HOULTON, Jr. - Son of the Founder



JOHN DALE HOULTON — Son of the Founder

This brochure attempts to trace the history of the firm from its inception, including the personalities of the Founder and his two sons. The present Directors feel that their personal contributions and that of the present management and staff should be recorded at a later date, especially in view of the changes that have, and are occurring in the range and pattern of the Building Industry. That job will best be done by their successors with twenty or thirty more years of hindsight.



Long service employees (from 25 to 50 years) of the Company pictured at a function with the Houlton family in 1972.

Seated from left: Mr. Peter Houlton, Mr. George Dale Houlton, Mrs. Joan Svenson (granddaughter of the Founder), Mrs. John Houlton, Miss Emmie Houlton (daughter of the Founder), Mr. Dick Houlton.



The original House and Yard in Baker Street, Hull.



The present Head Office and Works in Hyperion Street, Hull.



The Founder

Geo. Houlton Senior was born at Ulceby in Lincolnshire in 1854. He was apprenticed to the trade of Bricklayer in 1870 to Mr. William Bainton of Flixborough, Lincolnshire, even though his own father was a Builder and Joiner in the district. At the age of 25 he came to Hull to join with his elder brother John Houlton, a joiner, in partnership but this only lasted a week, although the two brothers carried out many large contracts together in later years.

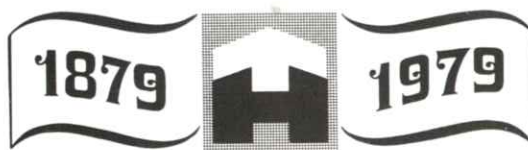
Setting up business on his own account in 1879, George Houlton started by building two houses in Dover Street, followed by two more in 1880, and then by 1882 he had a builders yard at 16/17 Walmsley Street, off Spring Bank, and was living at 3 Milton Street off Vane Street, but by 1886 his residence and yard were established at 6 Baker Street, Hull, where the firm's headquarters remained until 1960 when the move to Hyperion Street was made.

George Houlton's energy was not all devoted to hard work, indeed as a sportsman of no mean ability, hard play predominated throughout his life. He started shooting at the age of 7 years with the Head Gamekeeper on the Earl of Yarborough's estates in Lincolnshire and, by the age of 10 years he could ride any horse. He started hunting with the Holderness Hunt in 1884 and never missed a season up to his 80th year by which time he had ridden under 24 Masters for over half a century. Many was the time he was up at 4 a.m. to arrange his building work before setting off for a day's Hunting or Shooting.

Polo was another sport in which George Houlton excelled, the Holderness Polo Club Ground in those days was at the bottom of Westbourne Avenue. Prominent Hull business men John Bladon, Major Gleadow, Edward and Fred Hurtle, Philip Hodgson, Thomas Holtby, Frank Jackson, Philip Reckitt, Jos. Stephenson, John Todd and Clive Wilson, were fellow members of the team.

Country life always attracted George Houlton. Indeed on the death of his son Harry in 1925 he moved to his farm at Molescroft where he carried on farming and breeding hunters which were the pride of his life, besides coming into Hull each day to attend to business.

During the early years of the firm his wife Maria as well as bringing up a family of five looked after the office and did the accounts being helped in both activities from 1895 by Miss Kitty Nicholson who worked in the office until her death in 1936.



The early years to 1930

George Houlton Junior entered his father's business in 1897 straight from Hymers College, where he was one of the first pupils, and was joined by his youngest brother John in 1904. In the following years before the first World War, the firm undertook some of the greatest work of its history, the most outstanding being the construction of the great grain silos down the river Hull.

Most of these works were completed by the firm in close collaboration with the eminent Hull architect, Sir Alfred Gelder, whose firm of Gelder & Kitchen retain a most happy association with the Company to this day.



Hymers College, built 1893. ▲

Geo. Houltons tender for Hymers College was accepted on 20th October, 1890, amounts of £4 and £3 separated it from the next two. The estimated cost was £11,500-00.

The subcontractors were:—

Carpenters and Joiners:	Messrs. Marsden and Hudson] ALL OF HULL
Mason:	G. H. Panton	
Plumber:	Gouldesborough & Sons	
Tilers:	Smith and Hunter	
Painter:	Mr. J. Drewery] OF LONDON
Heating:	Ashwell and Nesbit	
	J. L. Bacon	
Stone Carving:	Mr. Gilbert Seale of Leeds	
Clerk of Works:	W. H. Williams	

The contract was signed on 20th December, and the date for the Foundation Stone laying was fixed for 21st January, 1891. The time for completion of the building was 15 calendar months.

In September, 1891 Mr. Houlton and Mr. Panton duly appeared before the Architect and Building Committee to explain the slow rate of progress, but eventually the completion date had to be extended through two very severe winters, when 115 working days were lost; and through strikes by the bricklayers and masons.

Further severe frosts in December 1892 and January 1893 delayed work still further but the building was eventually finally completed in July 1893 and opened on 30th October, 1893.

Historical Notes

The early years to 1930

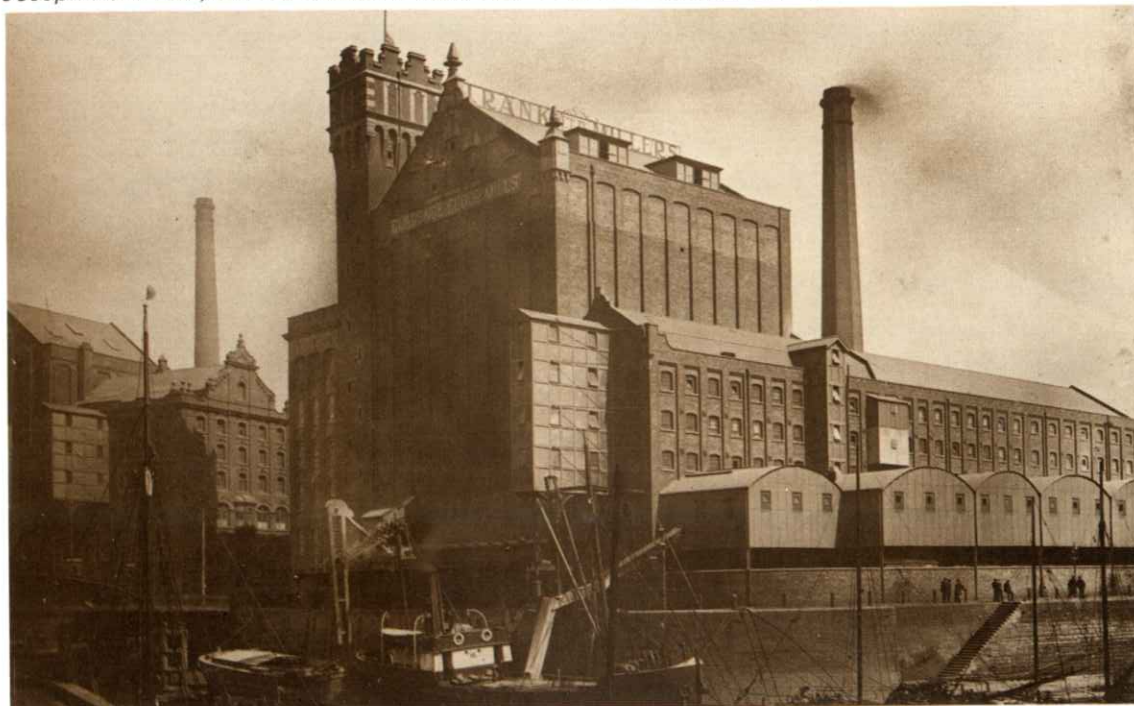
The First World War brought a change over to War Work Contracts and George Houlton in view of his expert knowledge was appointed by the Government to buy horses for use in France.

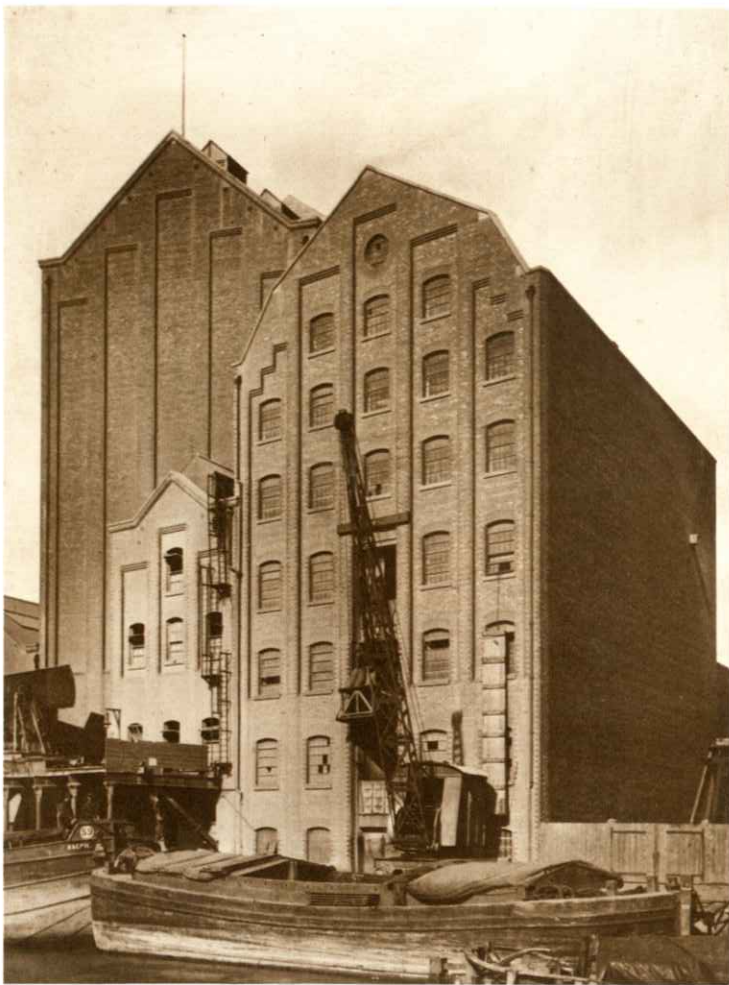
Following the War Geo. Houlton Jnr. was appointed President of the Hull and District Association of the National Federation of Building Trade Employers and for many years after took a leading part in its affairs. He also took over from his father more of the hard day to day working of the business, but still found time for hunting, polo, point to point racing and shooting, together with boxing, becoming a judge for the Northern Counties.

The business had by this time besides the Head Office and yard at 6 Baker Street, a Joiners Shop, stables and yard in North Street together with a wharf in Lime Street where bricks, sand and gravel from Lincolnshire were unloaded. A brick yard at Barton on Humber, Lincolnshire was also leased for many years.

Building continued, but to a lesser extent than before, due to the trade depressions of the 1920's and early 1930's and like many other businesses at that time the firm had a hard struggle to maintain its existence. To add to the difficulties the properties in North Street were the subject of compulsory purchase, their demolition being required for the then new Ferensway project; and the Firm had to build a new joiners shop in Baker Street and purchase stabling and storage accommodation in Spyvee Street. The house in which Mr. Houlton had lived for many years at 6 Baker Street was sold to make way for Messrs. Trippetts new store and the remainder of the property had to be adapted for John Houlton's residence so that with George Jnr. living at No. 2 Baker Street one of the partners was always available day or night to attend to business matters.

Joseph Rank Ltd., millers Clarence Flour Mill Clarence Street, Hull. ▼



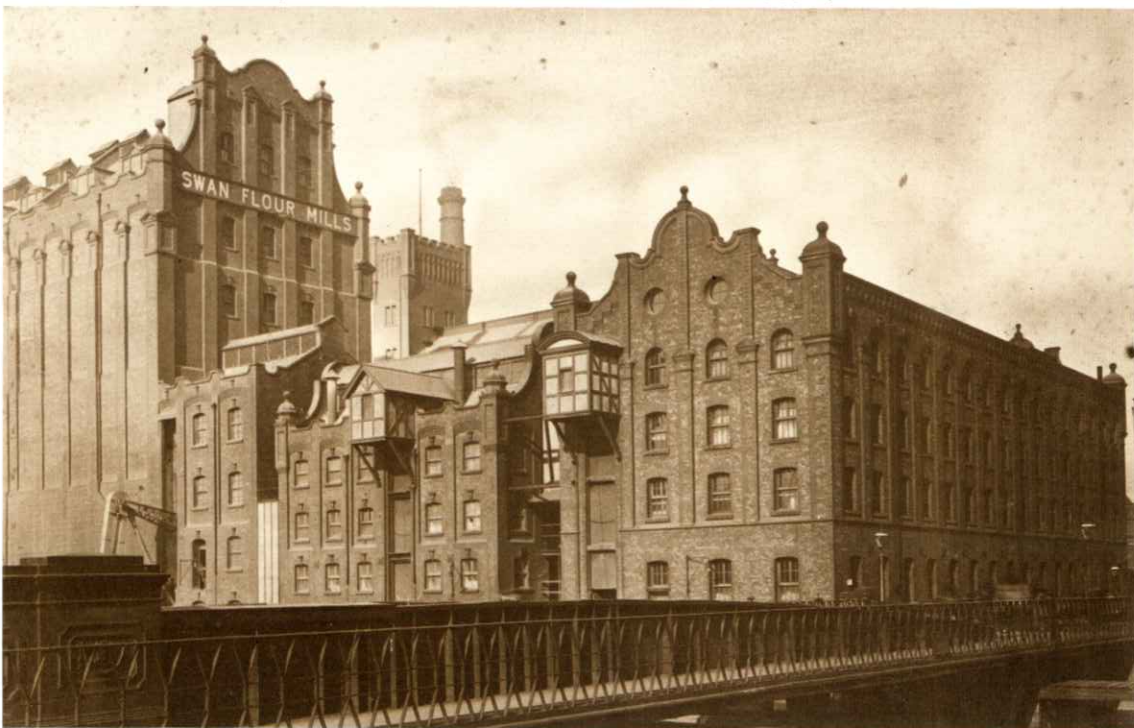


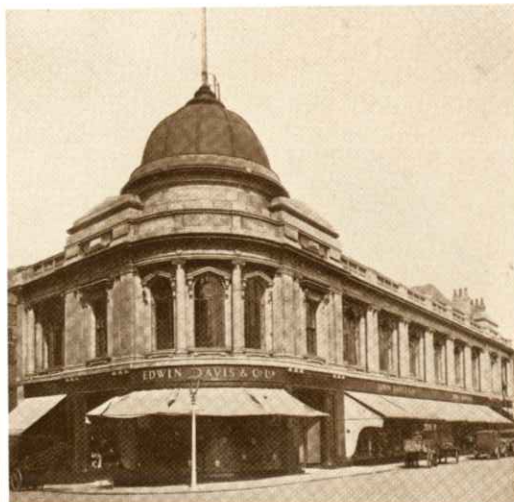
Premier Oil Mills, Stoneferry, Hull. ▲



Clock Tower, Riverside Quay, ▲
for L.N.E. Railway Co.

Rishworth, Ingleby & Lofthouse Ltd. Swan Flour Mills, Chapman Street, Hull.
The Mill was built in 1897, the Provender Mill in 1898 and the Silo in 1906. ▼





Top left: Princes Hall, George Street, Hull. Built 1910, the first purpose-built cinema in Hull.

Top right: Edwin Davis, Bond Street, Hull. Their first building was bombed by a Zeppelin in the first world war, re-built in Bond Street by Houltons, then destroyed in the second world war.

Below left: White House, Jameson Street, Hull.

Below right: The Majestic Cinema, George Street, Hull. Built 1915 (later known as the Criterion).

Base: Sir James Reckitt's Rest Homes, Garden Village, Hull. Built 1924.





Hull Daily Mail, Jameson Street, Hull. ▲



Costello & Sons Ltd., Savile Street, Hull ▲
(destroyed in the war).

Wm. Jackson & Son Ltd., Beverley Road, Hull. Built 1926. ▼



Haworth Arms, Beverley Road, Hull. Built 1926. ▼



The fortunes of the firm had reached its lowest ebb by 1933 and after a meeting with the creditors of whom G. & T. Earle Ltd. were by far the largest, a moratorium was declared from 1st April of that year for one year. The business to continue under the general control of a Committee of Inspection appointed by the creditors and under the supervision of the firm's Auditor W. H. H. Hutchinson Esq.

The agreement is detailed in the Appendix, and it is interesting to note that the Company still pays some of the firms mentioned therein on the 10th day of the month instead of the 1st day. This was an arrangement made at the time to spread the payments to the larger suppliers, from cash which it was hoped would be forthcoming from debtors in the first week of each month. There is no doubt this method worked very successfully, and equally no doubt that the companies concerned today do not know the reason.

The moratorium was extended for a further period on 16th April 1934. Meanwhile payments of 2/6 and 1/6 in the pound were paid, and small creditors under £10 were paid in full.

On 23rd January 1935 all creditors under £30 were paid in full and the remaining creditors now numbering 33 in all of the original 62 were paid a further 2/8 in the £.

A scheme for the conversion of the partnership business into a limited company was formulated, and an agreement was made (see appendix) that the outstanding debts would be discharged by payment of a cash sum, and 3% redeemable preference shares.

The formation of the limited company was achieved on 17th May 1935, and the redemption of the preference shares progressed over the next few years. Although ten years had been given as the period to redeem the preference shares the final payment was made on 28th May 1940, with the exception of G. & T. Earle Ltd. who received their final payment on 29th April 1942.

Particular mention should be made of G. & T. Earle Ltd.'s outstanding part throughout the moratorium, as there is no doubt that but for their support the firm would have gone into liquidation. The total sum owed to creditors was £13,163-12-0 of which £6,655-13-10 was due to G. & T. Earle Ltd. Not only did they delay receiving payments due, but also requested reduced payments in the £ to what the other creditors received. Mr. Fred Gibson their Director also made cash loans from his own resources to help the firm meet their commitments.

Credit must also go to those other creditors of 45 years ago without whose co-operation and understanding this centenary would never have been celebrated. Clearly this period in the firm's history marked the turning point in its fortunes, and the steady climb back to prosperity had commenced.

The Middle Years 1930-1960

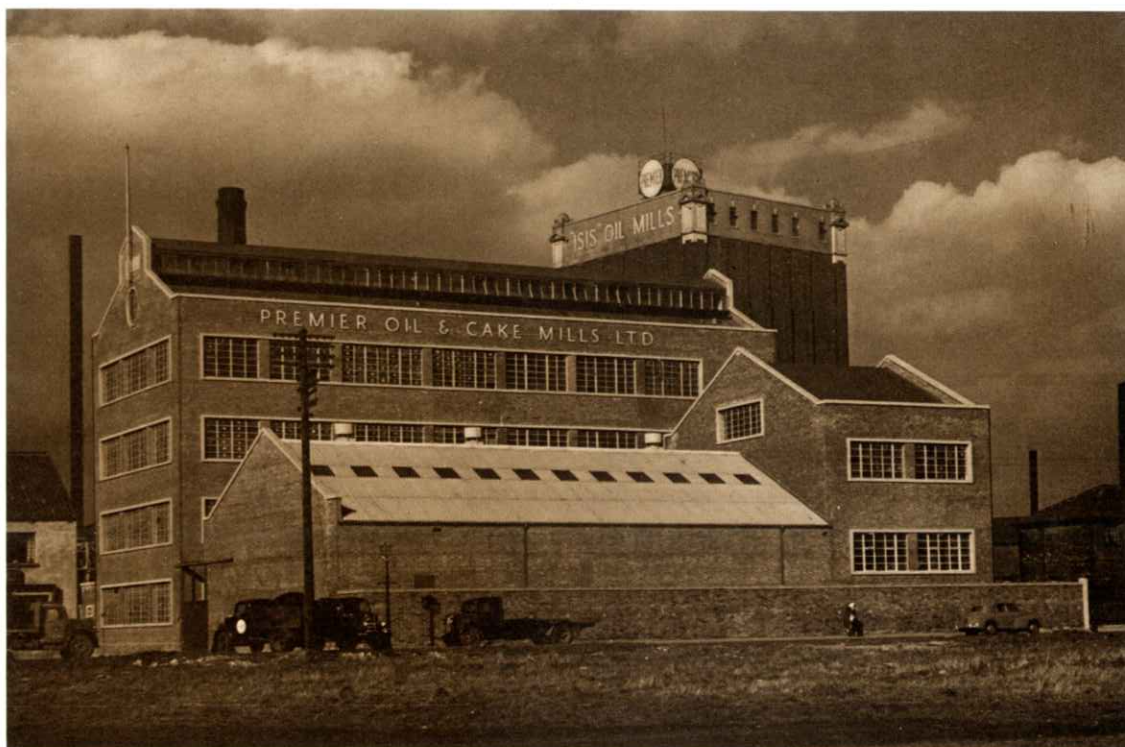
John Houlton's son Richard (Dick) had joined the firm in 1932 and like his uncle and father before him, had at his grandfather's wish gone straight out onto the sites to learn the trade at first hand as an apprentice bricklayer.

The business having been formed into a Limited Company in 1935, a new era started with the two sons George Jnr. and John at the head of affairs although George Snr. continued daily visits to the office until his death on 3rd February 1938. So passed one of the outstanding characters of his day, both in business and in sport, one who helped to build the present day Kingston upon Hull. He was held in the greatest esteem by his business associates and employees alike.

The two brothers determined to restore the Company to its former prosperity had made substantial progress to that end when the Second World War started. Many projects had to be abandoned and contracts were immediately undertaken for the War Office on coastal defence works, together with A.R.P. shelters, emergency water tanks and later a vast amount of air raid damage repair work. It was a substantial blow to the business when Geo. Houlton Jnr. was taken ill and died in November 1940.

John Houlton was left to carry on the business with Tom Tuck, a Director and Frank Parnaby the Secretary, and a loyal staff of the older employees who were past the age for military service. It is much to their credit that the Company was in a position, on the return of John Houlton's three sons from military duties in 1946, to tackle immediately the vast amount of new construction and rebuilding of Hull's war damaged buildings.

Premier Oil & Cake Mills Ltd./"Isis" Oil Mills. Hull. ▼



The Middle Years 1930-1960

Special emphasis should be made of John Houlton's courage and determination to keep the firm going during the war years, and especially during the devastation of Hull by enemy air raids. Living alone with his wife Amy in the centre of the city, there was one night when all surrounding buildings, and the whole of Prospect Street and King Edward Street was ablaze from incendiary bombs, some of which unaided he had managed to extinguish in the firm's offices and yard. Another dawn saw the yard piled high with debris from a near-miss land mine. There were regular bombing raids leaving windows broken and slates off the roof of the house, endless sleepless nights with fire watch duties and air raid alerts, yet despite all this, he was able to continue to manage the business and carry on a normal workday, as if nothing untoward was happening.

John Houlton retired to Hornsea in 1948 but like his father he could not settle and after a few weeks started travelling each day to the office. Eventually he returned to live in Hull and continued putting in a full day's work until his death in 1957, after a short illness.

The company now passed into the control of the third generation of Houltons, George Dale Houlton, Richard Houlton and Peter Houlton.

The Head Office and the whole of the joinery and other works were brought together on to a large site in Hyperion Street off Witham, Hull. The move being completed in 1960, and since that time additional office accommodation has been provided, and adjoining premises acquired to allow for the continuing expansion of the business.

Reckitt's Factory Buildings, Dansom Lane, Hull. Re-built 1948-54 after being destroyed in the war. ▼



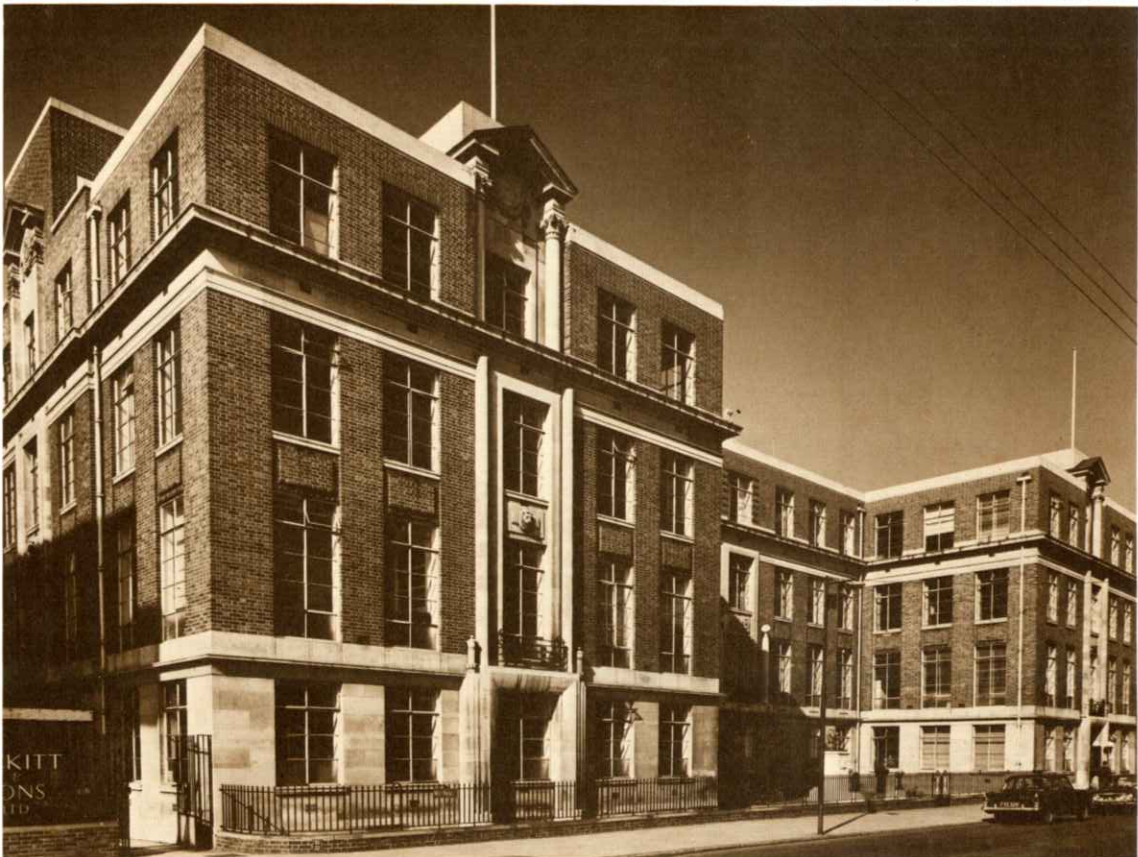


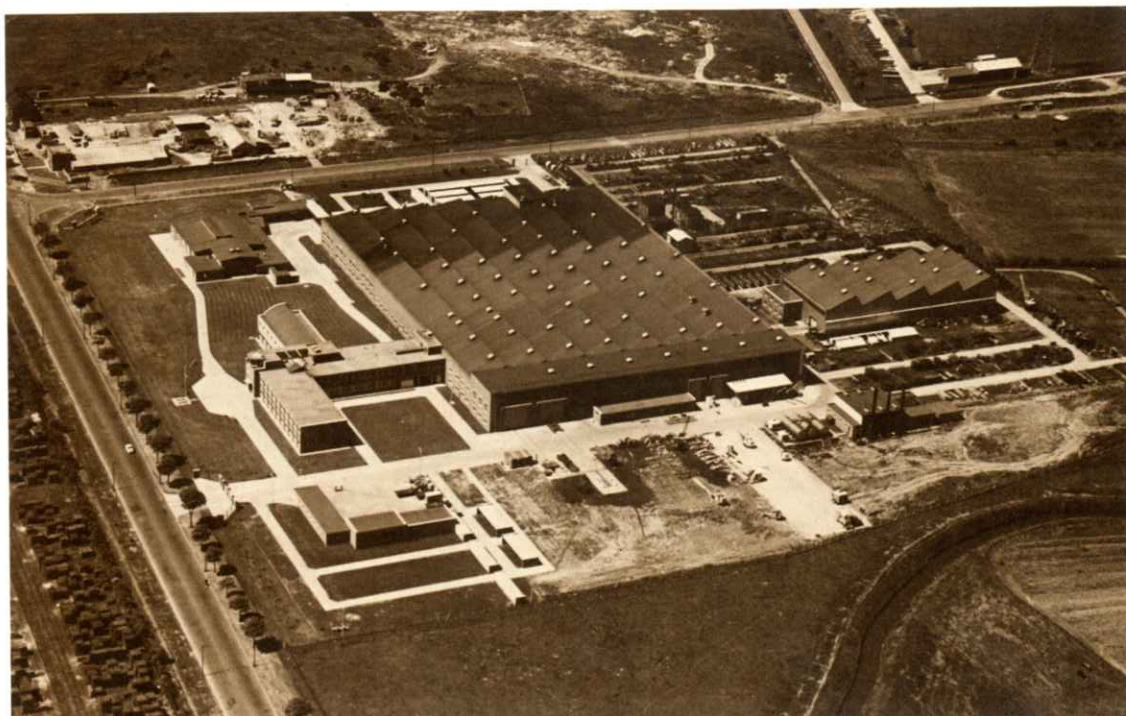
▲ Priory Inn, Priory Road, Hull. Built 1935.



Wm. Gilyott & Co. Ltd. Hull.
Built 1952.

Reckitt & Colman Ltd., Head Office, Dansom Lane, Hull. Built 1952. ▼

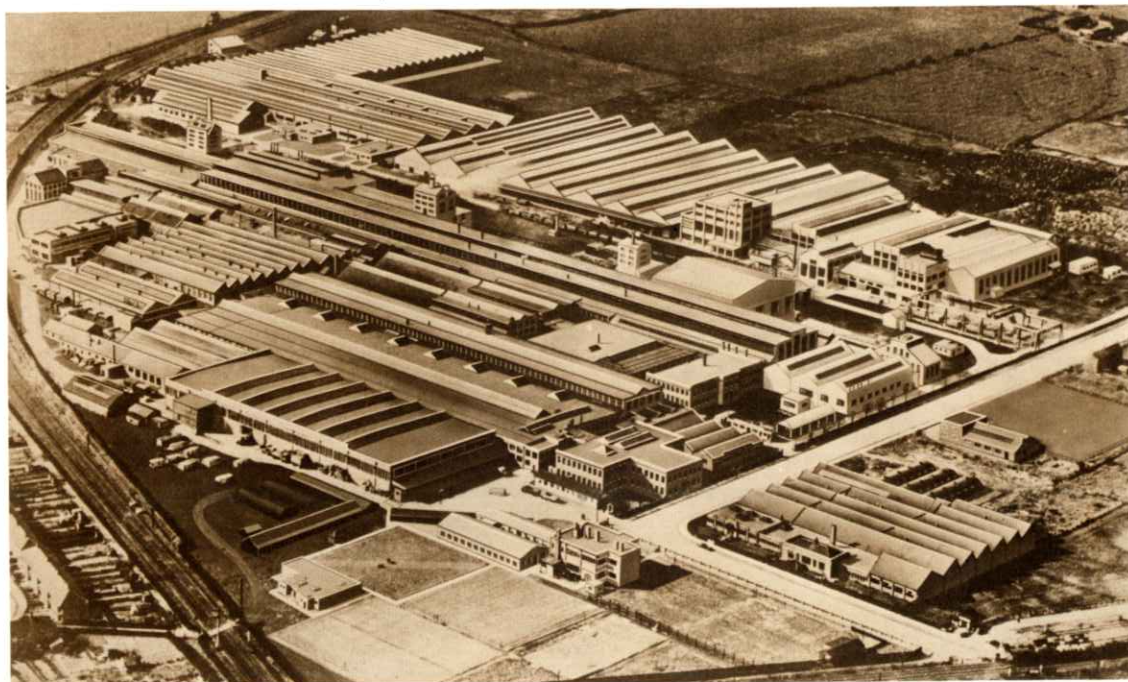


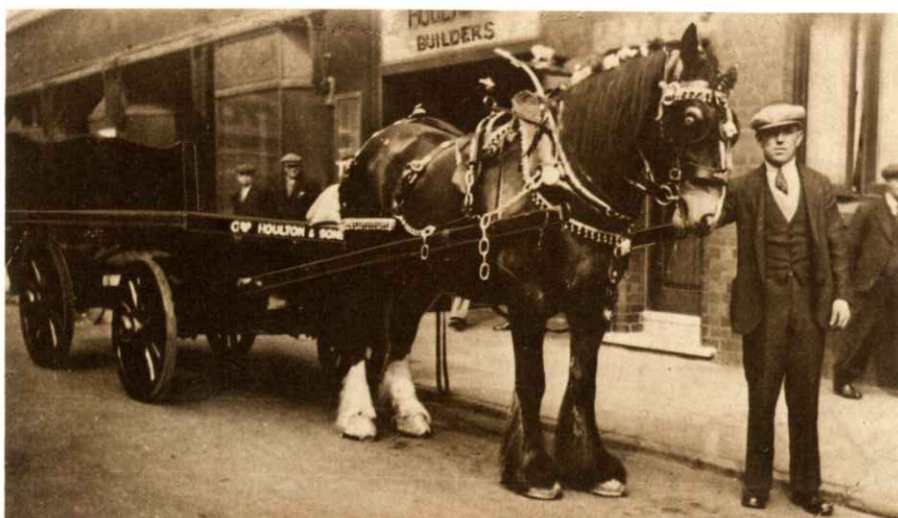


Priestman Brothers Ltd., Hedon Road, Hull. Built 1958.

BUILDING ON SUCCESS **a new era opens...**

The massive Ideal-Standard complex – National Avenue, Hull – built from 1910 to the present day.





The days of the horse and cart.



Progressing into the age of the vehicle. ►



The latest Mustang 108S excavator working on the Eel Farm at Drax. ▼



The present years 1960 onwards

Besides the normal building and contracting for industrial and commercial works the Company carries out civil engineering and reinforced concrete constructions, road making and mass foundation works. The Joiners Shop undertakes the manufacture of all types of joinery in soft wood and hardwood as well as plastic materials and also specialises in bank, shop and office fittings, high class panelling work, laboratory, kitchen and bathroom fittings.

Natural stone walling, ornamental plaster work, tiling to floors and walls, including acid resisting tiling for Industrial Plants, firebrickwork in setting boilers, flues and retorts, are all part and parcel of the great variety of specialised work the Company's craftsmen carry out regularly.

The Company has always employed a staff who, as a separate department, concentrates on repair and jobbing work. Small extensions or alterations to houses or shops, repairs to gutters, brickwork, plaster, firebacks and joinery repairs are done with the same attention to detail and efficiency as the large contracts and with the least possible inconvenience to the occupants. In addition the company is often called upon for restoration work and the great experience of the staff is at the disposal of anyone who requires this expert attention and advice.

A fleet of lorries is maintained by the Company to service the jobs with materials, scaffolding and plant, while a wide range of mechanical equipment, including excavators, compressors, dumpers, mixers, etc., is available for the contract works, serviced by its own Fitting Shop to carry out plant maintenance and repairs.



◀ *Blaydes House, High Street, Hull. Extensive restoration of a Georgian building.*



Halifax Building Society, Chariot Street, Hull (interior fittings). ▲

Dale Electric International Ltd. Group Headquarters at Filey. ▼



Part of the Chairman's suite of offices. ▼



Reception. ▼





The Missions to Seamen/Flying Angel Club, Hedon Road, Hull. ▲

Christ Church, South Ella. ▼





University of Hull, Sports Centre. ▲

Private residence, Kirkella. ▼



Into the 80's with

BUTLER



Fin Humber 57,000 sq. ft., 200' span x 288' long x 20' high of warehouse facilities (British Transport ▲ Docks Board, Hull).

An important development in 1968 was the appointment of the Company as the Butler Builders for Hull and the East Riding of Yorkshire. Butler Manufacturing Co. are the largest manufacturers of Pre-Engineered Buildings in the United States of America, and with their sales increasing in Europe they decided to set up a manufacturing plant in Kirkcaldy, Scotland in 1966. The next stage was to appoint reputable builders in selected areas of Great Britain, who would have the franchise to purchase and erect these buildings for their clients. So successful has this policy been, that Butlers have already expanded their plant to double its size, and have had their system buildings accepted by many local authorities in Scotland, as the best method of putting up advance factories, as it can so easily and economically be adapted to their particular needs.

Since its appointment ten years ago, the Company have erected over one hundred Butler Buildings in Hull for a variety of industrial uses, including factories, warehouses, sports halls, shops and supermarkets, most of which have office accommodation incorporated in the structure.

Croda Premier Oil Ltd., Stoneferry, Edible Oil & Process Packaging Building. Hull. ▼





Bowling Area ▲

Members Club Bar. ▲

Hull Bowl, 20 Lane Bowling Alley, Humber Bowling Ltd., Sutton Fields Estate, Hull. ▲

Storage and Offices for Asbestos & Rubber Co., Waverley Street, Hull. ▼





Hollis Bros. Ltd., timber stress building, Hedon Road, Hull. ▲

J. F. Appelbe & Co. Ltd., engineering works, Little Fair Road, Hedon Road, Hull. ▼





Erskine Systems Ltd., Electronic Engineers, Scarborough. ▲



Erskine Systems Ltd., interior. ▲

The commencement of a Butler Building for Horsley Smith & Co. Ltd. Hull. ▼





Factory personnel entrance. ◀

▶ New factory entrance.



Overall development with phase IIA extensions under way. ▶

New Pharmaceutical Laboratories for Reckitt & Colman Ltd. Hull.

The main asset of the Company has always been its Employees, many of whom have given long and outstanding service to the Company and at present there are forty-eight employees who have completed 25 years or more. Another feature of this family business has been the families of craftsmen who have generation by generation served with the Company all their lives, and whose grandsons are now working with the grandsons and great-grandsons of the founder. Indeed it is worthy of record that three of these craftsmen, each having over 50 years service with the Company, James Moore, Walter Everington and Richard Everington have all been honoured with the British Empire Medal in recognition of their services to the building industry. The fourth generation of the Houlton family now in the business comprises Richard Jnr., David and Robert Houlton.

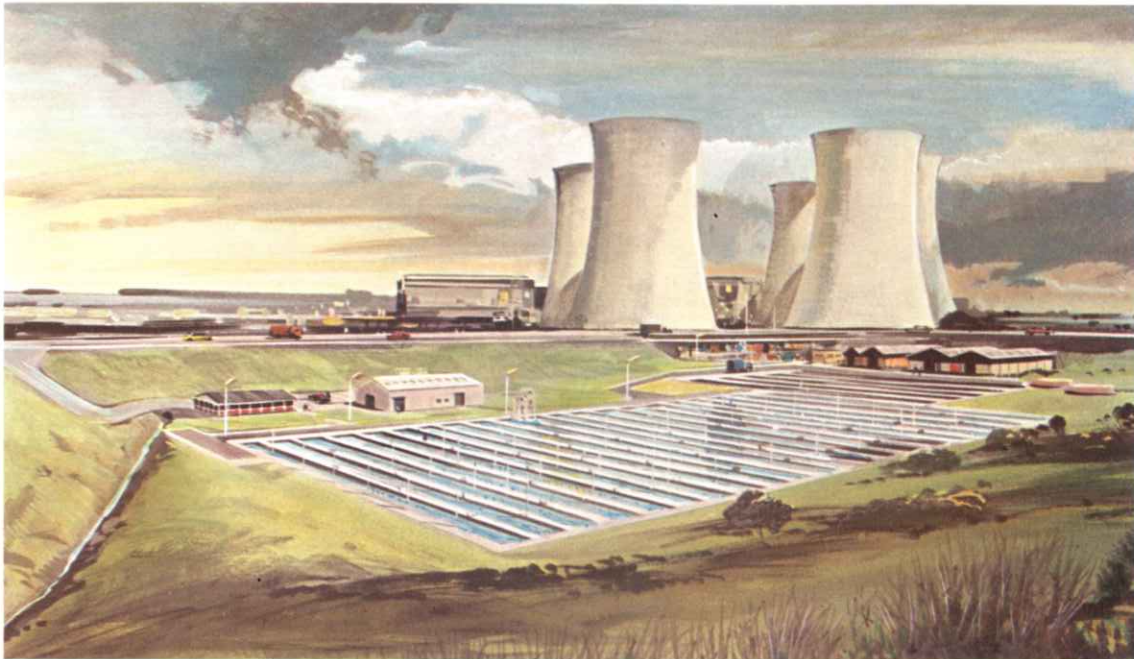


Springfield Way Industrial Development, Anlaby. ▲

The Company has other records of which it is proud in that not only is it the oldest established Builders and Contractors in the district, but it has worked for many local firms for periods of over seventy years thus evidencing the high reputation and happy business relationships it enjoys in the City. The Company is still the main contractor for Hymers College which was built by George Houlton as long ago as 1893. Earles Cement with whom George Houlton placed his first order in 1879 still supplies the firm with many tons of cement yearly, although now merged with The Blue Circle Group, and supplying through a builders' merchant. It must be one of their oldest customers.

The Main Board of Houlton family directors is now supported by the appointment of executive directors who control the different departments and the organisation is being run by up to date methods to ensure prompt and efficient service for all the different types of work undertaken. Qualified and experienced technical staff, together with the first rate craftsmen, provide the team now available to Clients and Architects.

200 tonne, 10 acre Eel Farm at Drax for RHM Aquacultural Developments Ltd. ▼





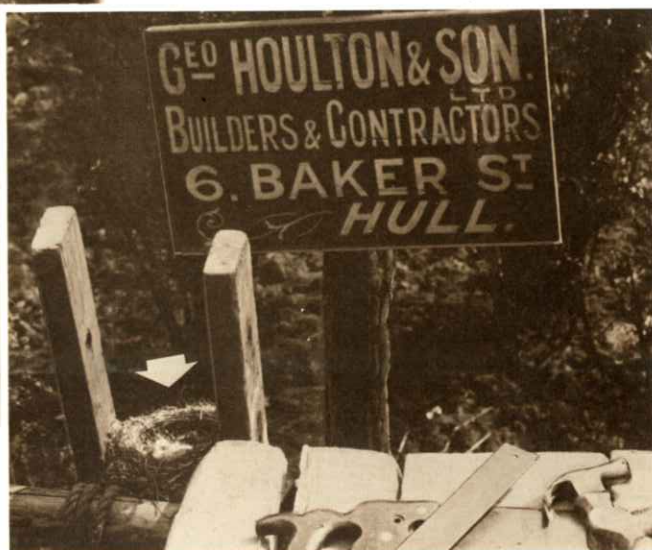
Indenture of George Houlton, the founder of Geo. Houlton & Sons Ltd. ▲

The Company is celebrating its Centenary, and the Directors can look back on a very interesting and eventful history. A story of fortune and misfortune sustained throughout by the support and loyalty of the employees to the Houlton's, whose personal endeavours have combined over the years to produce this progressive Family Business.



George Houlton (founder) with his ▲ grandson Mr. Dick Houlton, apprentice bricklayer. Taken on the construction site of the Pottery Plant, Ideal-Standard.

Progress delayed, due to circumstances ▼ beyond our control.



THE AGREEMENT

GEORGE HOULTON & SON, HULL.

WE the undersigned have read and fully approve the scheme (which embodies the general principles whilst subject to any necessary variation in detail which may seem necessary or advisable to the Committee of Inspection) for the conversion of the partnership business carried on by the firm of George Houlton & Son into a limited company and WE HEREBY AGREE that if and when the formation of the new company is duly completed we will accept in full settlement and discharge of the remaining debt appearing opposite our signature hereto the amount of cash and the number of 3% redeemable preference shares set forth in the adjoining columns opposite our signature and WE HEREBY AGREE to take up such 3% redeemable preference shares when allotted to us subject to the memorandum and articles of association of the proposed new company.

Dated this _____ day of _____ 193

NAME :-	SIGNATURE :-	AMOUNT OF DEBT. £ s d	AMOUNT OF CASH TO BE PAID ON ACCOUNT:- 2/8d in the £.		Total to be paid in Cash. £ s d	Amount to be satisfied by issue of Preference Shares. £.
			£ s d	Odd shillings and pence. £ s d		
Burwick Sand & Gravel Quarries (Lord & White Limited)		94- 3- 1	12-11- 1	-12- 0	13- 3- 1	81
Bettney, W.E.		61- 0- 8	8- 2- 9	-17-11	9- 0- 8	52
Banks, W.&Co. Limited.		45-18- 8	6- 2- 6	-16- 2	6-18- 8	39
Bailey, T.W. & Sons.		79-17- 1	10-12-11	- 4- 2	10-17- 1	69
Braithwaite, George (Jnr)		206- 8- 3	27-10- 5	-17-10	28- 8- 3	178
Berracough, James & Co. Limited.		98-19- 4	13- 3-10	-15- 6	13-19- 4	85
City Electrical Engineering Co (of Hull) Limited.		39-1-10	5- 5- 8	- 7- 1	5-12- 9	34
Dawber, Townsley & Co. Limited		180-16- 7	24- 2- 2	-14- 5	24-16- 7	156
Earle, G.&T. Limited		5,546- 8- 2	739-10- 8	-17- 6	740- 8- 2	4,806
Freeman, W.E. Limited		57-10- 8	7-13- 5	-17- 3	8-10- 8	49
Frank, John & Sons Limited		267-11- 3	35-13- 7	-17- 8	36-11- 3	231
Gale & Hutchinson		38-16- 2	5- 3- 6	-12- 8	5-16- 2	33
Haywards Limited		34-15- 3	4-12- 8	- 2- 7	4-15- 3	30
Harrison, W.L. Limited		145-19- 1	19- 9- 2	- 9-11	19-19- 1	126
Horsley, Smith & Co. Limited		123-10- 2	16- 9- 4	- -10	16-10- 2	107
Hull Concrete Stone Co. Limited		100- 7- 4	13- 7- 5	-19-11	14- 7- 4	86
Johnson, George		82- 5- 3	10-19- 4	- 5-11	11- 5- 3	71
King & Co. Limited		168- 5- 1	22- 8- 8	-16- 5	23- 5- 1	145
Kettlewell, G.M.		77-18- 7	10- 7- 9	-10-10	10-18- 7	67
Leeds Fireclay Co. Limited.		264- 5- 1	35- 4- 9	- 4	35- 5- 1	229
McCall & Co. (Sheffield) Limited		30- 6-11	4- 0-10	- 6- 1	4- 6-11	26
Mead, Henry & Co. Limited.		229-15- 1	30-12- 9	- 2- 4	30-15- 1	199
Mateer & Nelson Limited.		110- 1- 6	14-13- 9	- 7- 9	15- 1- 6	95
Orwin, E.		34- 2- 6	4-11- 0	-11- 6	5- 2- 6	29
Rowntree, J.T.		104- 4- 7	13-17-11	- 6- 8	14- 4- 7	90
Radpath, Brown & Co. Limited		150- 0- 6	21- 6- 9	-13- 9	22- 0- 6	138
Sootney, T.J. & Co. Limited.		65-15- 8	8-15- 5	- 3	8-15- 8	57
Steele, F.H.		40- 5- 5	5- 7- 4	-18- 1	6- 5- 5	34
Sangwin Limited.		70- 0- 1	9- 6- 8	-13- 5	10- 0- 1	60
Taylor, J & Son.		215- 6- 3	28-14- 3	-12- 0	29- 6- 3	186
Ulliot & Needham		55-17- 2	7- 8-11	- 8- 3	7-17- 2	48
Williamson, Henry & Co. Limited		319-14-11	42-12- 9	- 2- 2	42-14-11	277
Whitehead, A.W. Limited, Leeds		80-19- 8	10-15-11	- 3- 9	10-19- 8	70
		29,230-18- 9.	1,230-15-10.	17- 2-11.	1,247-18- 9.	27,983.

This Agreement was made when the Partnership was converted into a Limited Company.

Appendix

THE MORATORIUM AGREEMENT

THIS AGREEMENT is made the 1933 day of **BETWEEN GEORGE HOULTON the Elder GEORGE HOULTON the Younger and JOHN DALE HOULTON** trading together in copartnership as Builders and Contractors under the style or firm of Geo. Houlton & Son (hereinafter called "the Firm") of the first part **WILLIAM HENRY HEAP HUTCHINSON** of the City and County of Kingston upon Hull Chartered Accountant (hereinafter called "the Accountant") of the second part and the several **PERSONS COMPANIES AND PARTNERSHIP FIRMS** being Creditors of the Firm whose names and addresses are set forth in the Schedule hereto and all other persons (if any) who are now Creditors of the Firm and shall assent hereto in writing or otherwise (all of which parties are hereinafter called "the Creditors" which expression shall where the context admits include the persons respectively deriving title under them) of the third part.

WHEREAS:-
(1) Difficulties have arisen with regard to the financial position of the firm, as a result whereof it was deemed expedient to ascertain the views of the Creditors.

(2) It appears to be the general wish of the Creditors that the Firm should not become bankrupt or execute a deed of assignment for the benefit of Creditors but that they should continue to carry on their business but under the supervision of the Accountant and the general control of a Committee of Inspection appointed by the Creditors and under the special terms and conditions hereinafter appearing.

NOW IT IS HEREBY AGREED as follows:-

IN consideration of the agreement by the firm to the terms and stipulations hereinafter contained and to the joinder by the other Creditors in this agreement each of the Creditors agrees to extend to the firm a moratorium for the space of one year from the 1st day of April 1933 during which period each of the Creditors agrees that he will not by legal proceedings or otherwise take any steps to enforce to obtain payment of monies due to him from the firm at the 1st day of April 1933.

2. A Committee of Inspection shall be appointed consisting of the following:-

Mr. T. V. Whittaker (Hy. Williamson & Co. Ltd.),
Mr. F. Gibson (Messrs. G & T. Earles Ltd.) (Co-opted)
Mr. E. Grant (John Houlton & Son Ltd.)
Mr. A. E. Spring (King & Co. Ltd.)
Mr. J. Taylor (J. Taylor & Son).

Mr. J. C. Townsley (Dawber Townsley & Co. Ltd.)

3. THE firm and the Creditors hereby consent to payment by the firm and/or the Accountant of the sum of £250 to be distributed pro rata to the amounts due to the sub-contractors as at the said 1st day of April 1933 as soon as figures are agreed and it has been definitely ascertained that the scheme set on foot by this agreement is assured of success and of a further payment of £250 to be distributed pro rata amongst the said sub-contractors on or before the 31st day of May 1933.

4. THE said George Houlton the Elder agrees

that he will pay into the business for employment in such manner as shall be decided by the Committee of Inspection (a) the sum of £500 forthwith (b) the sum of £200 on or before the 31st day of May 1933 and (c) the sum of £300 on or before the 30th day of September 1933.

5. AS a matter of policy it is considered desirable that if arrangements can be made for the realisation at satisfactory prices of the securities held by the Bank in connection with the overdraft certain collateral security will become available which can either be utilised at the discretion of the Committee of inspection for the general financing of the business of the firm or alternatively distributed pro rata amongst the Creditors but the inclusion of this clause in the present agreement does not bind the Committee of Inspection to realise the said securities during the period of the moratorium should they in their unfettered discretion consider it inadvisable so to do either on account of the time not being opportune for that purpose or in view of the value of the assets to the business of the firm.

6. ALL sub-contractors accounts which become due for payment after the 31st day of March 1933 shall be paid by the firm forthwith upon the receipt by the firm of the monies for payment of such accounts.

7. ALL accounts for materials supplied and services rendered after the 31st day of March 1933 shall be paid punctually and so far as possible in no case shall payment be deferred for longer than one month after the due date for payment.

8. THERE shall also be paid subject to the approval of the Committee of Inspection legal and accountancy costs in connection with the investigation of the affairs of the Firm prior to the meeting, negotiations with Creditors prior to and subsequent to the meeting and in connection with the scheme of re-organisation or otherwise howsoever arising.

9. ALL cash transactions of the Firm shall be under the general control of the Accountant who shall submit details of the proposed control and the charge for his services for the approval of the Committee of Inspection.

10. THE responsibility of the Accountant in respect of the cash transactions of the firm shall be strictly limited to the act or neglect of himself or his clerks or servants and he shall not bear any responsibility in respect of any cash or other dealings of the Firm which may not pass through his hands or be under his direct supervision or control.

11. THE drawings of the firm during the period of the Moratorium shall not exceed £1000 per annum which shall be divided amongst them as they shall decide.

12. THE Firm shall keep proper records of all monies received by them and shall apply same only for the purposes of the business in accordance with the terms hereof.

13. THE Accountant shall during the period of the Moratorium submit for the inspection and approval of the Committee of Inspection a monthly

cash summary.

14. THE Accountant shall submit accounts showing the position at the end of six months from the said 1st day of April 1933 for the inspection and approval of the Committee of Inspection and a communication shall be forwarded to the Creditors advising them of the progress made at this date.

15. THE duties and remuneration for the existing office staff shall be considered by the Committee of Inspection who shall be entitled to decide as to the future staff of the Firm and the salaries which they are to receive. The firm shall comply with the directions of the Committee of Inspection and shall take such steps as the Committee shall require with regard to the employment or discharge of the staff and in respect of the rate of remuneration which they are to receive.

16. THE Committee of Inspection are entitled through the Firm to engage such additional staff as they may think expedient including, if necessary, an efficient pricing and tendering official.

17. THE Accountant shall be entitled to pay to any Creditors whether a party to this scheme or not any sum not exceeding £20 on his own initiative but no Creditors shall be paid at any one time any sum in excess of this sum by the Accountant without the sanction and approval of the Committee of Inspection.

18. DURING the period of the moratorium the Firm shall not realise any of their assets except with the approval and consent of the Committee of Inspection but should during this period the Committee deem it desirable to realise any of the assets of the Firm then the Firm shall comply with the directions of the Committee as to the sale and realisation and the proceeds of such realisation shall be paid into the business to be dealt with in accordance with the directions of the Committee of Inspection.

19. THE general policy of the firm with regard to tenders during the period of the moratorium shall be subject to the guidance and control of the Committee of Inspection and the Firm shall immediately inform the Accountant of any tender made by them in excess of £2000 for their own trades and they shall not sign the acceptance contract in respect of any such tender unless with the approval of the Committee of Inspection first had and obtained.

20. THE Partners of the firm shall do their utmost to assist in the satisfactory working of the firms business as the Committee of Inspection shall from time to time require them to carry out.

21. THE Firm hereby indemnify the Committee of Inspection and each of them and each of their respective estates and effects from and against all proceedings costs claims and demands in respect of any act or thing done or omitted to be done by them in respect of the business of the affairs of the Firm or any of them in pursuance of the Moratorium Scheme.

IN WITNESS whereof the said parties hereto have hereunto set their hands and seals the day and year first before written.

THE SCHEDULE referred to

Ashford Dunn & Co., Ryde Avenue, Hull.
Allen T. W. & Sons Ltd., 119 George Street, Hull.
Asbestos & Rubber Co. Ltd., King Edward Street, Hull.
Burstwick Sand & Gravel Quarries (Lord & White Ltd.)
Burstwick, Nr. Hull.
Brumby & Clarke Ltd., Wright Street, Hull.
Brown, A. & Son Ltd., George Street, Hull.
Bilton, F., 87 Wincolmlee, Hull.
Bettney, W. H., 68a Goodwin Street, Hull.
Banks, W. & Co. Ltd., Madeley Street, Hull.
Bailey, T. W. & Sons, Baker Street, Hull.
Braithwaite, Geo. Junr., Witham, Hull.
Barraclough, Jas & Co. Ltd., 102 Wincolmlee, Hull.
Cooper Bros., 72 Lombard Street, Hull.
Clark & Graham, 73 Prospect Street, Hull.
City Electrical Engineering Co. (of Hull) Ltd., 24 Porter Street, Hull.
Chapman, J. T. & Son, 119 Clarendon Street, Hull.
Diespeker & Co. Ltd., 57 Holborn Viaduct, London E.C.1.
Davies, J. W. & Son, Smeaton Street, Hull.
Dale, L. M., 1a Hings Lane, Hesse.
Dawber Townsley & Co. Ltd., West Street, Hull.
Earle, G. & T. Ltd., Wilmington, Hull.
Freeman, W. E. Ltd., Albert Avenue, Hull.
Frank John & Sons Ltd., South Ferry, Nr. Hull.
Hull Forge Iron & Steel Co. Ltd., Cannon Street, Hull.
Hardman, E. Son & Co. Ltd., Wilmington, Hull.
Hall, F. & Son, Alexandra Road, Hull.

Haywards Ltd., 187 Union Street Borough, London S.E.
Hinchcliffe, W. N., South Elmsale, Nr. Pontefract.
Hawwell & Co. Ltd., Castle Street, Hull.
Hill, H. D. & Sons, 8 Williamson Street, Hull.
Hesk, H., Southcoates Station, Hull.
Harrison, W. L. Ltd., 30 George Street, Hull.
Houlton, John & Son Ltd., 71/73 Beverley Road, Hull.
Horsley Smith & Co. Ltd., Hedon Road, Hull.
Hewetson, J. A. & Co. Ltd., Dansom Lane, Hull.
Hull Concrete Stone Co. Ltd., Lorraine Street, Hull.
Hall, J. W. & Co., 17 Walton Street, Hull.
Johnson, George, Mason, 60 Bean Street, Hull.
Gale & Hutchinson, Royal Insurance Buildings, Bowlalley Lane, Hull.
Kaye, T. S. & Son, Bond Street and Smeaton Street, Hull.
King, J. A. & Co. Ltd., 181 Queen Victoria Street, E.C.4.
Kitching & Co., 145 Southcoates Lane, Hull.
Kingston Creosoting Co. Ltd., Jameson Chambers, Jameson Street, Hull.
King & Co. Ltd., Church Side, Hull.
Kettlewell, G. M., 255-7 North Road, Hull.
Laverack & Goddard Ltd., Great Union Street, Hull.
Limmer & Trinidad Lake Asphalt Co. Ltd., 106 Sackville Street, Manchester.
Langton, H. & Son, Clough Road, Hull.
Lawson W. & Son, Craven Street, Hull.
Longley, F. R., "Caledon", Inglemire Lane, Hull.
Leeds Fireclay Co. Ltd., South Side, Queens Dock, Hull.
Moss, S. (Eagle Iron Works), Bromley Street, Hull.
McCall & Co. (Sheffield) Ltd., Temple-Borough, Sheffield.

Mellowes & Co. Ltd., Corporation Street, Sheffield.
Mead, Henry & Co. Ltd., 3 Princes Dock Side, Hull.
Mateer & Nelson Ltd., Jameson Street, Hull.
Northern Asphalt & Roofing Works Co. Ltd., Cardigan Road, Leeds 6.
Orwin, R., Plane Street, Hull.
Quibell & Son Ltd., Beverley Road, Hull.
Rowntree, J. T., Lime Street, Hull.
Ross, F. & T. Ltd., Myton Street, Hull.
Ridsdale & Walker Ltd., St. Stephen's Square, Hull.
Rosser & Russell Ltd., Bank Low Mills, Marsh Lane, Leeds.
Redpath Brown & Co. Ltd., St. Andrew's Works, Edinburgh.
Scotney, T. J. & Co. Ltd., 21 North Walls, Hull.
Shackleton, John F. & Son Ltd., Goole, Yorks.
Slingsby, G. & A. E., Cumberland Street, Hull.
Steel, F. H., 84 Brinknell Avenue, Hull.
Shaw, T. W., 36 Glencoe Street, Hull.
Sangwin Ltd., Sculcoates Lane, Hull.
Tealby & Co., Oriental Buildings, High Street, Hull.
Thomas Richard & Co. Ltd., Redbourne Works, Scunthorpe, Lincs.
Taylor, J. & Son, Saner Street, Hull.
Tutty, J. E. S. Exors., Dunswell Road, Cottingham.
Ulliott & Needham, 41 Wellington Lane, Hull.
Wilde, W., 70 De Grey Street, Hull.
Williamson, Hy & Co. Ltd., Queens Dock Side, Hull.
Whitehead, A. W. Ltd., Leeds, 230 Wellington Street, Leeds.
Young, W. H. 48 Hopwood Street, Hull.

Appendix

The following list of contracts completed over the years is representative of the work carried out by the Company and apologies are tendered to those firms whose names have been omitted for reasons of space only.

Mills & Silos

Joseph Rank Ltd., Clarence Street, including offices
Hurtleys Ltd., Glasshouse Row (now demolished)
H.O.M.C.O. Stoneferry
Rishworth, Ingleby & Lofthouse, Cleveland Street (now Spillers Ltd.) destroyed in the war
Premier Oil & Cake Mills Ltd., Stoneferry, including offices (now Croda Premier Oils Ltd.)
Wray Sanderson & Co. Ltd. (now Croda Premier Oils Ltd.) Morley Street
B.O.C.M. Extract, Foster Street
Eagle Oil Mill, Cleveland Street (now demolished)
Chambers & Fergus, Wincolmlee including offices

Factories & Works

Ideal-Standard Ltd., covering 90 acres of works
Reckitt & Colman Ltd., Dansom Lane — Rebuilding of head office and works
Reckitt & Colman Ltd., Morley Street
J. L. Seaton & Co. Ltd., Air Street
Thomas Robinson Sons & Co. Ltd. — new offices, warehouses, Anlaby
Universal Oil Co. Ltd., offices and factory extensions
Needlers Ltd., new offices and extensions
Hargreaves Black Lead Works, Gloucester Street
Wm. Jackson & Sons Ltd., Bakery and Shops
Ostlers Ltd., Bakehouse
Hull Brewery Co. Ltd., Bottling Stores, chimney, etc.
Humber Fish & Fish Manure Co. Ltd., Stoneferry, offices and warehouses
Earles Cement Works, warehouses and kiln works
Danish Bacon Co., Factory, Tower Street (now demolished)
Priestman Bros. Ltd., Williamson Street works and Thomas Street offices
Priestman Bros. Ltd., new offices and works, Marfleet
Distillers Co. Ltd., Saltend — sundry extensions — canteen, laboratory, etc
Esso Ltd., Saltend — sundry works
John Good & Sons Ltd., High Street, offices and warehouses
Wm. Gilyott & Co. Ltd., High Street — rebuilding three warehouses
Geo. Buckton & Co. Ltd. — Offices and warehouse
B.P. Chemicals International Ltd.
Dale Electric of Great Britain Ltd., offices and extensions
Erskine Systems Ltd. — offices and factory
Reckitt & Colman Ltd. — pharmaceutical buildings
Smith & Nephew Ltd. — warehousing
ARCO Ltd. — warehouses
Springfield Way Estate, Anlaby — offices and factories
J. A. Kinnerly Ltd. — sheet metal works
Waterloo Engineering Co. Ltd.
Hull Brewery Co. Ltd. — bottling plant and store
J. F. Appelbe & Co. Ltd. — offices and works
Renault Ltd. — Goole depot
Afos Ltd. — storage and manufacturing buildings
Reckitt & Colman Ltd. — Joiners Shop
Wakefield Joinery Co. — workshops
Blundell-Permoglaize — paint factory

J. H. Fenner & Co. — office modernisation and warehouse
Michael Stewart Ltd. — offices and chemist store
British Transport Dock Board — Transport warehouses
Turbo Tools (Hull) Ltd. — offices and engineering works
British Cocoa Mills — extensions
Croda Premier Oils Ltd. — margarine packing plant
Croda Universal Ltd. — sundry extensions
Humber Stores Contractors — warehouse
Marley Building Supplies — Hull Depot
Aaronite Ltd. — offices and warehouse
J. E. Eltherington & Son (Aluminium) Ltd.
RSH Warehousing Ltd. — Pocklington
W. L. Thompson Ltd. — car showroom and garage
A.B.I. Properties Ltd. — factory development
R.H.M. Flour Mills Ltd. — sundry works

Churches

Princes Avenue Wesleyan, corner Blenheim Street
St. Michaels & All Angels, Orchard Road
St. Albans, Hall Road
St. Marks, Anlaby Common
Methodist Chapel, Preston Road
Danish Church, Osborne Street
Presbyterian Church, Baker Street
St. Cuthberts, Marlborough Avenue
St. Pauls, Bridlington Street
Mission to Seamen, Hedon Road
Christ Church, South Ella
Pentecostal Church

Public Houses

Priory Inn, Priory Road
Anchor Inn, Southcoates Lane
Cosy Corner, Bridlington
Duke of Cumberland, Ferriby
Drum & Cymbal, Osborne Street
Haworth Arms, Beverley High Road
Mermaid, Bethune Avenue, Hessle
The Falcon, Falkland Road
Grapes Hotel, Sykes Street

Banks, etc.

Midland Bank Ltd.
Yorkshire Bank Ltd.
Halifax Building Society

Shops

Hammonds Ltd. extensions and warehouses
Wm. Jackson & Sons Ltd.
Clough Road corner
Paragon Street
Preston Road
Hull Daily Mail Buildings, Jameson Street
Asbestos & Rubber Co., A. Brown, Boots Ltd., Polwhite Ltd. — Block, King Edward Street (destroyed in the war)
Costello Ltd., Savile Street/Jameson Street corner (destroyed in the war)
Bladons Ltd., Prospect Street (destroyed in the war)
Trippetts Ltd., Baker Street corner (destroyed in the war)
Cattles Ltd., Hessle Road
Edwin Davis Ltd., Corner Bond Street (destroyed in the war)
Crest Cash & Carry
Clifford Dunn — Savemore Stores

Cinemas

Majestic, Grimston Street corner (later known as The Criterion)
Princes Hall
Eureka
Holderness Hall

Schools

Hymers College
Mersey Street School
Chiltern Street School
Boulevard School
Buckingham Street School
Paisley Street School
Hopewell Road School
St. Richards, Marfleet Lane
Hymers College Junior School

Houses

W. Jessop Esq., 'Avanti', Beverley High Road
T. Hudson, Esq., Hessle
Francis Myers Esq., 'Roxton', North Ferriby
Sir James Reckitts Rest Homes, Garden Village
Sir Arthur Atkinsons House, Elloughton
Sir Philip Reckitt House, Sutton
G. F. Barker Esq., Cherwell, Swanland Road, Hessle
Harold Needler Esq., Swanland Garth, North Ferriby
Misses Samman, The Croft, Ferriby
Jesse Spring, Heads Lane, Hessle
Welton House Wing, Harrison Broadley Esq.
P. B. Parish Esq., Swanland
Houghton Hall, Sancton — Restoration

Miscellaneous Works

Wheeler Street, Hedon Road and Hessle Road Tramsheds
Clock Tower, Riverside Quay (now demolished)
Hull Ice House, St. Andrews Dock
Hellyer Bros. Ltd., St. Andrews Dock
Thos. Hamling & Co. Ltd., St. Andrews Dock
Hudson Bros., St. Andrews Dock
C. D. Holmes Ltd., Alfred Street
Nurses Home, Hull Royal Infirmary, Mill Street
Fracture Clinic, Hull Royal Infirmary, Brook Street
Brumby & Clarke, Wright Street
Water Tower, Hessle Road
Buoy Sheds, Victoria Dock
Victoria Mansions, Gt. Passage Street
New York Hotel extensions
Harry Marshall Bakery
Hull Boys Club, Ropery Street
Reckitt & Sons Ltd., swimming bath
Henry Williamson & Co. Ltd., North Bridge — office and warehouses
Martins Bank Ltd., Whitefriargate
Royal Liver Buildings, George Street
Yorkshire Electricity Board — Substations, Creyke Beck, Cottingham, Hull East, Hull West
Clough Road, offices and depot
Hull Prison — cell block and workshops
Everthorpe Borstal, North Cave — civil works, roadworks and wall
J. A. Hewetson & Co. Ltd., — kilns and storage sheds
Horsley Smith & Co. — sundry works and extensions
Hollis Bros. Ltd. — machinery works and storage buildings
Hull University Sports Centre
Hull Bowl



Geo. Houlton
& Sons Ltd.

BUILDERS AND CONTRACTORS
HYPERION STREET, HULL HU91BD
TELEPHONE 0482 20486

