

MODERN BUILDING AND CONTRACTING

GEO. HOULTON & SONS
HULL

ESTABLISHED 1879



BY APPOINTMENT.

EARLE'S CEMENT

Modern Building and Contracting

GEO. HOULTON & SONS
6 BAKER STREET
HULL

Wharf:
LIME STREET

Brickyard:
BARTON-ON-HUMBER

Stores:
NORTH STREET
BAKER STREET

Telephones: CENTRAL 6860-6861

Printed and produced by
ED. J. BURROW & CO., LTD.
109 KINGSWAY, LONDON, W.C. 2,
and
CHELTENHAM.

Telegrams: "Frank, South Ferriby, Hull."

Established 1870.

JOHN FRANK & SONS

H. L. FRANK. A. FRANK. T. FRANK.

Facing Brick Manufacturers

*Burton-on-Stather
Brickworks:*

All kinds of
Trentine Red Roofing Tiles
Flat Tiles
Ridges and Paviers
also Three Hole Kilns

MANUFACTURERS OF THE FINEST
QUALITY RED WIRECUT FACING BRICKS

Moulded Bricks a Speciality

*Normanby Estate
Brickworks:*

All kinds of
Moulded Bricks
any size or thickness to order
Also
Arch Bricks

HORKSTOW BRIDGE: BRICK AND TILE WORKS

Since 1870 and up to the present we have
been the premier firm in this district for
Facing Bricks.

BEST STOCKS HAND MADE & THIN HAND MADE

Below are a few of the Jobs supplied amongst many more too numerous to mention:—

MARKET HALL.
HYMERS COLLEGE.
NUMEROUS BOARD SCHOOLS.
A LARGE PORTION OF
MESSRS. RECKITT'S, SISSONS
& BLUNDELS
PUNCH HOTEL.
RECKITT INSTITUTE.
SEVERAL CHURCHES IN HULL.

LITTLE COATES CHURCH.
A LARGE PORTION OF
MESSRS. RANKS'.
HURTLEY'S & SWAN FLOUR
MILLS.
MOST OF THE FINEST
CHIMNEY SHAFTS IN HULL.
A LARGE PROPORTION OF THE
OIL MILLS.
THE FERENS HOMES.

DR. LEE'S HOMES.
RACING STABLES, NEWMARKET
NOEL TERRY, Esq., NEW
RESIDENCE, YORK.
CHURCH AT HUYTON,
LIVERPOOL.
MESSRS. BARCLAYS BANK,
NORWICH.

South Ferriby - BARTON-ON-HUMBER

And at BURTON-ON-STATHER

London Agent:

C. H. BROODBANK, CLARENCE HOUSE, 8 ARTHUR STREET
LONDON BRIDGE, LONDON, E.C. 4.

HORSLEY, SMITH & Co. Ltd.

TIMBER AND BUILDERS' MERCHANTS

Extensive first class Stocks include over
FIVE ACRES OF SHEDDED JOINERY TIMBER
and Timber suitable for General Building Purposes.

Also Large Stocks of
ASBESTOS SHEETS AND TILES, BLUE BRICKS,
CEMENT, DRAIN PIPES,
SLATES, ROOFING TILES, FLOOR TILES, ETC.

HEDON ROAD & DALTRY ST.
HULL

7 PICCADILLY
YORK

Manufacturers of—

RED PERFORATED STOCK AND MOULDED
BRICKS. KILNS, FLOOR TILES,
RIDGES. NON-POROUS
ROOFING TILES.

AIR BRICKS

THE SANDHOLME BRICK & TILE
COMPANY, LIMITED
GILBERDYKE, EAST YORKS

Goods:
Sandholme. L. & N.E.R.

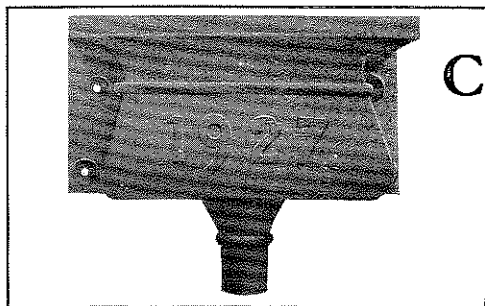
Arch and
Well Bricks.

Land Drain Tiles
2 inch to 12 inch, etc.

Telegrams:
"Biggs, Saltmarsh Station."

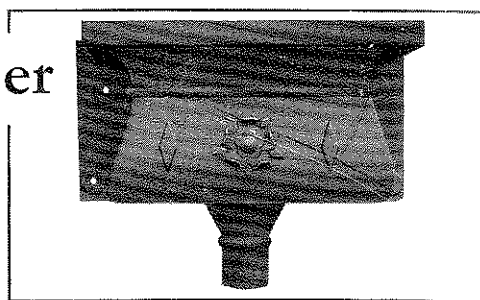
Registered Address—

LAXTON, Nr. HOWDEN, EAST YORKS



Chas. F. Procter

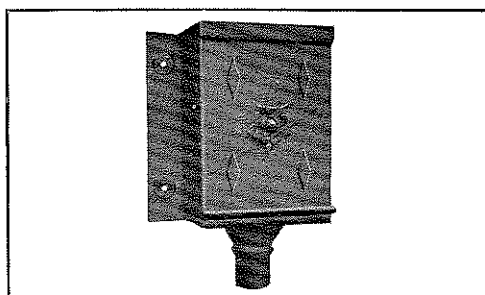
*Plumber
Heating Engineer
Electrician*



PERIOD CAST LEAD WORK

Fallpipes, Heads, Panels, Gutters, Plain Sheet, Church Restorations.

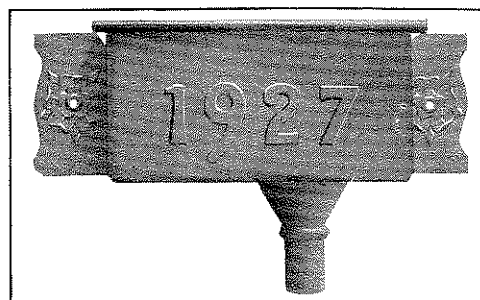
Architects' Designs carried out or Designs submitted to Specification.



522 Holderness Road,
92 Hessle Road,
2 Newcomen Street,

Warehouse—
Vauxhall Grove,

HULL



THE ORIGINAL FIRM OF
O. TOFFOLO & CO., LTD.

Duro Works, Alexandra Road, HULL.

Telephone : 7311.

Telegrams : "MOSAIC, HULL."

SPECIALISTS IN

Roman Marble Mosaic
"Wood Duro" Jointless Flooring

Venetian Terrazzo Paving
Glass Mosaic and Tiling

WE HAVE THE BEST EQUIPPED BREEZE BLOCK PLANT IN THE NORTH OF ENGLAND.

PRICES ON APPLICATION.



NO CONNECTION WITH ANY OTHER FIRM.

Note the only Address : **Alexandra Road, HULL.**

1789 - 1928

DAWBER, TOWNSLEY & Co. Ltd. HULL.

Our craftsmanship is displayed on most of the
Contracts to which reference is made in this
Brochure.

SLATING AND TILING CONTRACTORS
since the reign of King George III—a period of over
130 years.

Telephone : 6864 Central.

Telegrams : "Dawber, Hull."

Enquiries Solicited.

On Admiralty List.

Contractors to His Majesty's Government.

TROUP, CURTIS & CO., LTD. *Electrical Engineers and Contractors*

SPECIALITIES :

Complete Electrical Installations for
Ships, Mills, Petroleum Distillers.

DYNAMOS, SWITCHBOARDS, MOTORS, FANS,
STEAM DRIVEN GENERATING SETS, ETC.

45 GEORGE STREET, HULL

Telegrams: "Voltejar."

Telephone: 1604.

And at LONDON, LIVERPOOL, BRISTOL, CARDIFF & MIDDLESBROUGH.

THE HULL CONCRETE STONE Co. Ltd.

Manufacturers of all kinds of High-Class Precast Concrete Work

*Architectural
Stone
Dressings
and
Precast Concrete
Work
of every
description.*



*Balustrades
and
Ornamental
Garden Work
Etc.*

Telephone Central 33289.

LORRAINE STREET, STONEFERRY, HULL

STRUCTURAL STEELWORK

ORNAMENTAL IRONWORK

SECTIONAL BUILDINGS

STRUCTURAL
STEELWORK.

STANCHIONS

COLUMNS
SOLID STEEL or
CAST IRON.

ROOF PRINCIPALS.

PURLINS

COMPOUND GIRDERS

FIREPROOF DOORS

FABRICATED
MATERIALS
of all kinds.

STEEL RODS
for
REINFORCEMENT.

ORNAMENTAL
IRONWORK.

STAIRCASES

FIRE ESCAPES

RAILINGS

FENCING

GATES

VERANDAHs.

SECTIONAL
BUILDINGS

DUTCH BARNS

PAVILIONS

GARAGES

WORKSHOPS

SHEDS

BALCONIES.

DESIGNS
SUBMITTED
ON REQUEST.

PROMPT ATTENTION
given to all
ENQUIRIES.

ERECTIONS
carried out in all parts of
the Country.

We have a fully
QUALIFIED STAFF
always at your Service.

STEEL MERCHANTS

W. Banks & Co., Ltd.

Madeley Street,
HULL.

Telegrams : "GIRDERS, HULL."

Telephone : 33985.

*We are
Reinforced
Concrete
Engineers*

NEW and better methods of reinforced concrete construction are continually being discovered—methods whereby greater speed of erection is possible and reduction of costs effected. These new methods depend for their success upon experienced engineering. We, who have specialised for many years in reinforced concrete engineering have been responsible for the designing of many of the most remarkable concrete structures of recent times. In the case of Messrs. Wrigley's building illustrated below, this factory was erected in record time. The "mushroom" system employed means the absence of depending beams which ensures flat ceilings, 100% glass area, and unusually rapid construction.

Truscon Floors

The Truscon Floor offers many advantages for modern buildings. It is easily constructed, is light, rigid and fire-resisting. Its hollow spaces are ideal for housing pipes, wiring, etc.

"Hy-Rib" Metal Lathing

"Hy-Rib" is the metal lathing which is at once reinforcement and centreing. It can be used for flat or curved surfaces and affords a perfect key for concrete or plaster.



*The New Factory for Messrs. Wrigley
Products Limited, at Wembley.
Architects: Wallis, Gilbert & Partners.
Reinforced Concrete Engineers:
The Trussed Concrete Steel Co., Ltd.*

The Trussed Concrete Steel Co., Ltd.

REINFORCED CONCRETE ENGINEERS

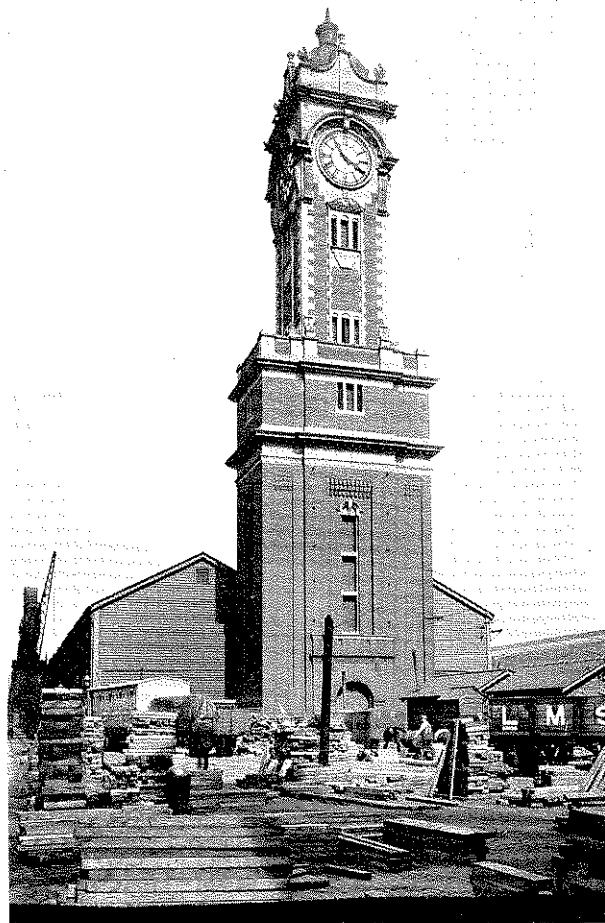
22 Cranley Gardens, South Kensington, London, S.W.7



MODERN BUILDING AND CONTRACTING

A few typical examples of Contracts
carried out by us in recent years.

GEO. HOULTON & SONS
HULL



CLOCK TOWER
erected at
RIVER SIDE QUAY, HULL
for
THE LONDON & NORTH EASTERN RAILWAY CO.

A Short History of **GEO. HOULTON & SONS**

THE passage of nearly half a century has been marked by a great development of the business founded by Mr. George Houlton, Senior, in October, 1879, and now widely known in the City of Hull and throughout the East Riding by the style of Geo. Houlton & Sons.

The history of this old-established Contracting business is visible in a tangible and permanent form in a series of notable buildings completed in and around the City of Kingston upon Hull, forming well-known commercial and educational landmarks in the City and surrounding districts.

Amongst such works may be counted the fine modern buildings of Hymers College, The Boulevard Higher Grade School, and many other schools for the Corporation of the City, also the Hessle Road, Anlaby Road, and Holderness Road Tramway Depots.

The Firm has a reputation second to none in the district for the highest class of domestic work, country houses, etc., and the business forms a singularly complete and self-contained organisation—the result of long and steady growth under the close personal supervision of the partners from the Head Office in Baker Street, where there are now two partners in residence, thus ensuring prompt attention at all times and offering particularly economical services to their clients.

Special attention is given to repair work and each job, no matter how small, receives individual supervision and attention until properly completed.

The Firm has its own brickworks at Barton-on-Humber, covering upwards of 22 acres and capable of producing close upon two million bricks per season. There are stores in Baker Street and North Street, Hull, where large stocks of bricks, sand, gravel and other building materials are always available, and their Wharf on the River Hull has a complete, up-to-date installation of electric cranes, stone-crushers, mortar mills, concrete mixers and other essential requirements of an important contracting business.

The Joinery Department is equipped with an equally modern and up-to-date wood-working plant, with extensive storage room for the drying and seasoning of timber.

From the facts stated it will be apparent that the Firm is well equipped for undertaking all classes of building work on the largest scale. The Firm employs an average of 150 men and can readily provide a much larger staff than this for the execution of big contracts.

It may be added that practically all the materials used on the contracts illustrated were supplied by the various firms whose announcements appear in this Brochure.

The principals of the Firm are :—

GEORGE HOULTON.

GEORGE HOULTON, Junior.

JOHN D. HOULTON.



Architect

JOHN BILSON, F.S.A., F.R.I.B.A.

HYMERS COLLEGE, HULL



Architects

WHEATLEY L.R.I.B.A. & HOULDSWORTH P.A.S.I.

BUNGALOW

built for

W. JESSOP Esq., Beverley High Road, Hull

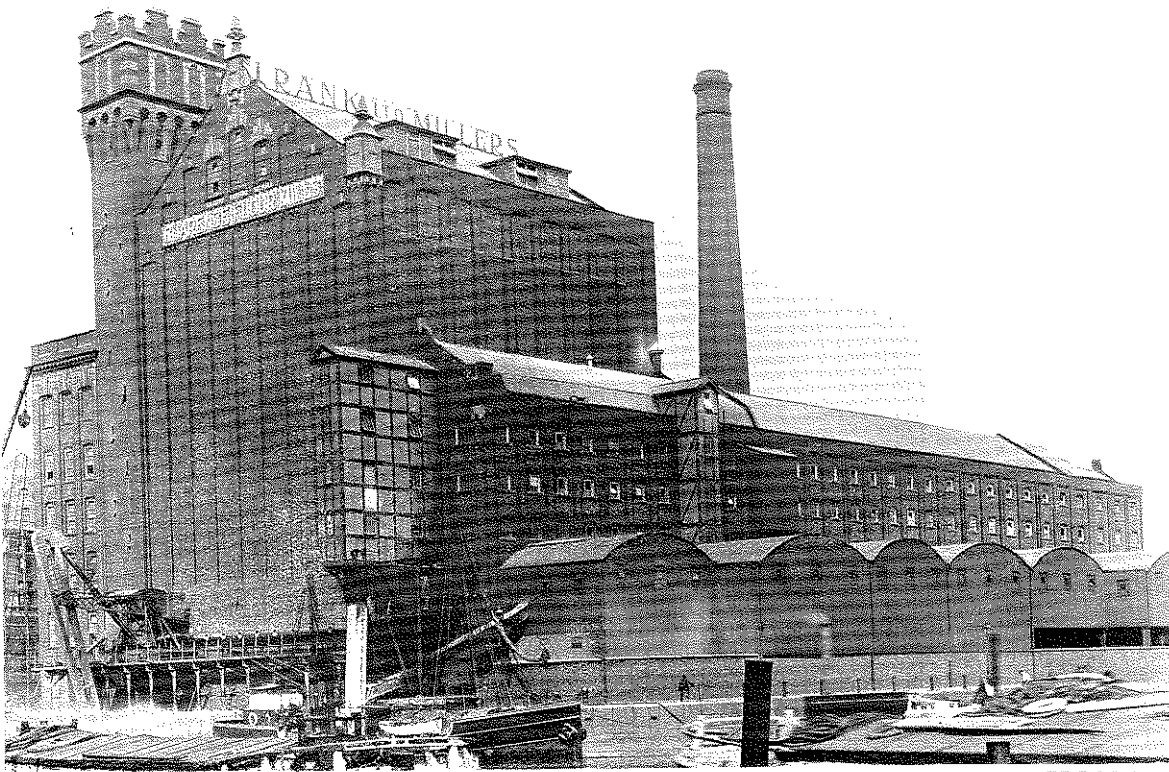
Sub-Contractors :

Plumbing King & Co., Ltd.
Stonework J. Peers & Son
Roof Tiling	Dawber, Townsley & Co., Ltd.
Cement	G. & T. Earle, Ltd.

FLOUR MILL

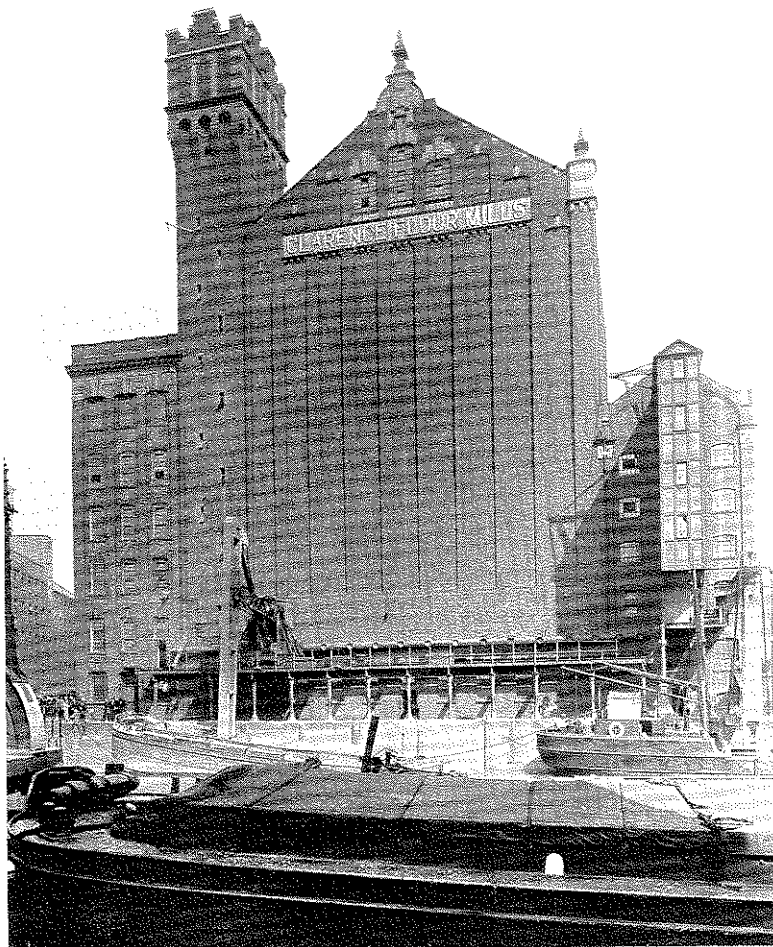
built for

Messrs. J. RANK, Ltd.
the well known Flour Millers, Hull, Cardiff and London.



Architects

GELDER & KITCHEN, F.F.R.I.B.A.



Architects

GELDER & KITCHEN F.F.R.I.B.A



Architects

FREEMAN, SON & GASKELL, F.F.R.I.B.A

PICTURE HOUSE
built for
 Messrs. MORTON'S PICTURES, Ltd.



Architects

FREEMAN, SON & GASKELL F.F.R.I.B.A.

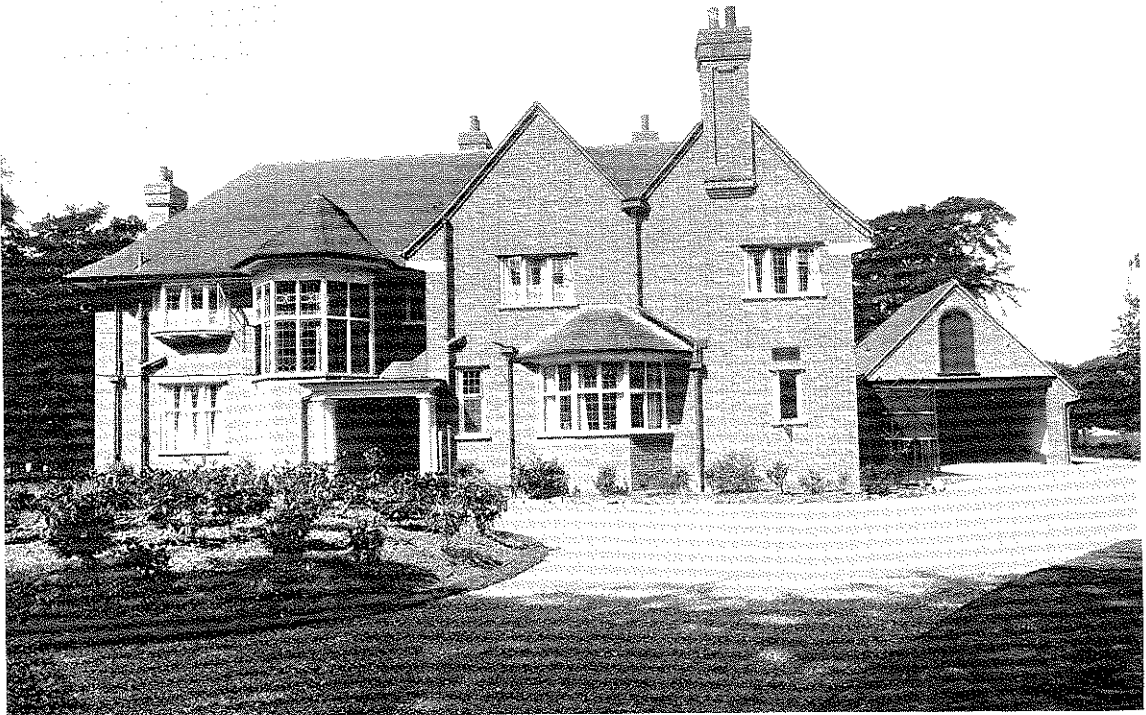
MAJESTIC PICTURE HOUSE

built for

Messrs. MORTON'S PICTURES, Ltd.

Sub-Contractors :

Slating	Dawber, Townsley & Co., Ltd.
Plumbing	W. L. Harrison, Ltd.
Steelwork King & Co., Ltd.
Cement	G. & T. Earle, Ltd.



Architects

FRONT VIEW

W. S. WALKER, F.R.I.B.A., SON & FIELD.



Architects

REAR VIEW

W. S. WALKER, F.R.I.B.A., SON & FIELD.

HOUSE

built at

HESSLE, HULL, for T. HUDSON, Esq.

Sub-Contractors :

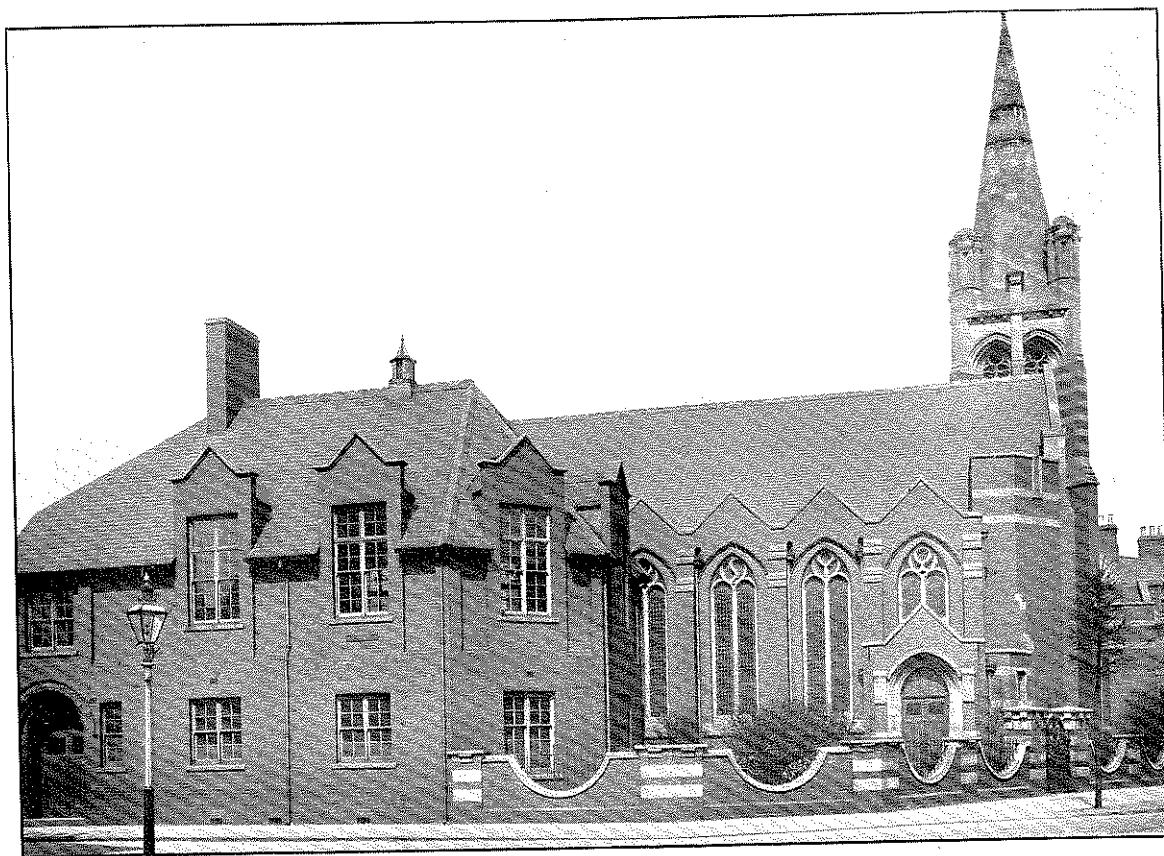
Plumbing	Drape & Upton
Masonry	J. Peers & Son
Tiling	H. Williamson & Co., Ltd.
Plastering	F. H. Steele
Artificial Marble	O. Toffolo & Sons
Cement	G. & T. Earle, Ltd.




Architects

GELDER & KITCHEN. F.F.R.I.B.A

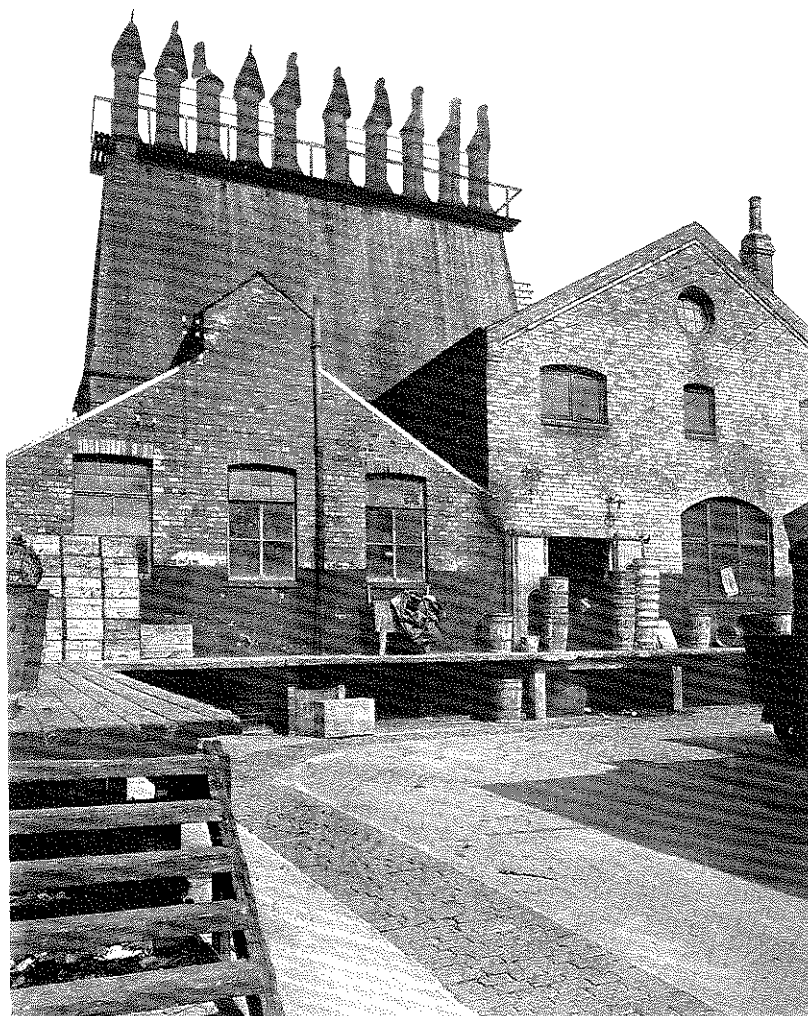
SHOP PREMISES
built for
Messrs. COSTELLO & SONS, Ltd.



 Architects

GELDER & KITCHEN F.F.R.I.B.A.

PRINCES AVENUE WESLEYAN CHAPEL
built for
THE TRUSTEES



Architects

WHEATLEY, L.R.I.B.A. & HOULDSWORTH, P.A.S.I.

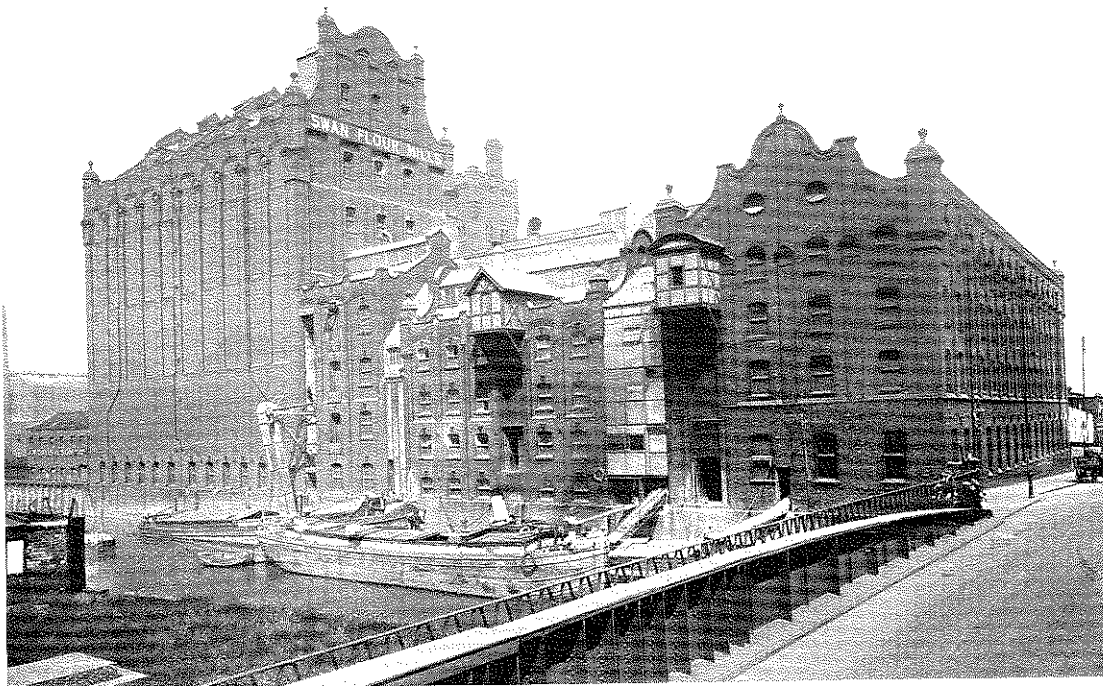
EXTENSION TO FISH-CURING PREMISES

built for

Messrs. S. NOWELL, Ltd., Gillett Street, Hull

Sub-Contractors :

Joinery	J. Taylor & Son
Slating	.	..	Dawber, Townsley & Co., Ltd.	
Cement	G. & T. Earle, Ltd.	



Architects

GELDER & KITCHEN, F.F.R.I.B.A.

FLOUR MILL

built for

Messrs. RISHWORTH, INGLEBY & LOFTHOUSE, Ltd., Hull



Architects

FREEMAN, SON & GASKELL, F.F.R.I.B.A.

OFFICES, ETC.

built for

Messrs. HUMBER FISHING & FISH MANURE Co., Ltd.



Architects

GELDER & KITCHEN, F.F.R.I.B.A

HAWORTH ARMS HOTEL

for

Messrs. WORTHINGTON & Co., Ltd.

Sub-Contractors:

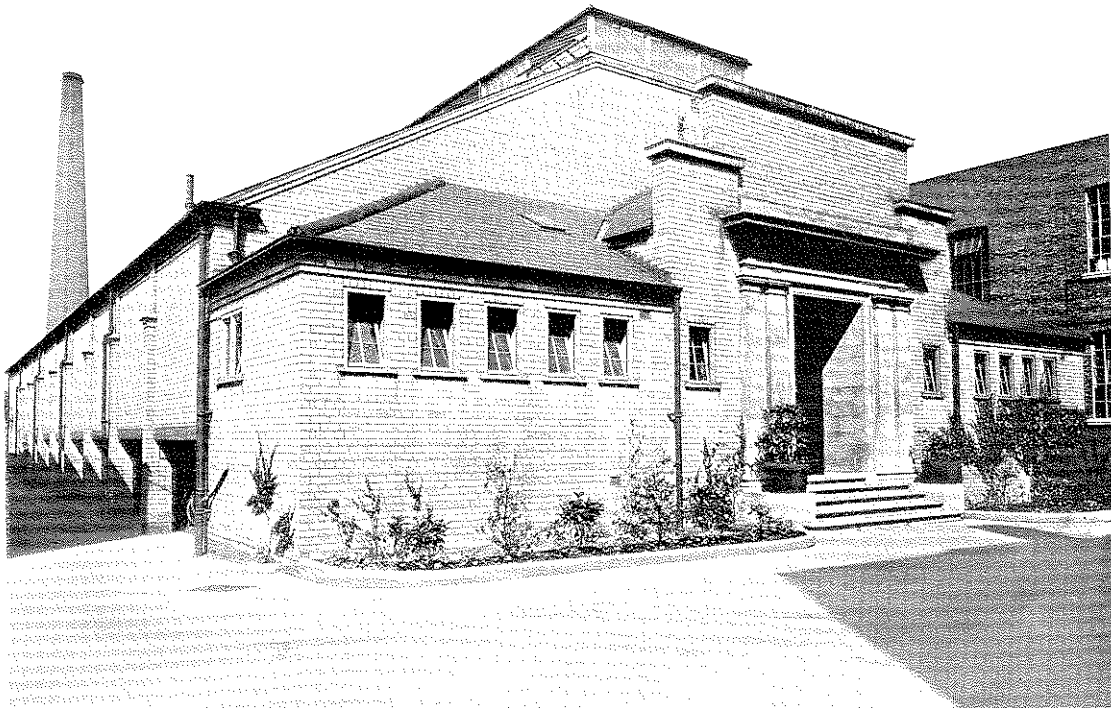
Joinery	J. Taylor & Son
Slating	Dawber, Townsley & Co., Ltd.
Plastering	F. H. Steele
Cement	G. & T. Earle, Ltd.



Architects

GELDER & KITCHEN, F.F.R.I.B.A.

HOUSE
built at
FERRIBY for FRANCIS MYERS, Esq.



Architects

GELDER & KITCHEN, F.R.I.B.A.

SWIMMING BATHS

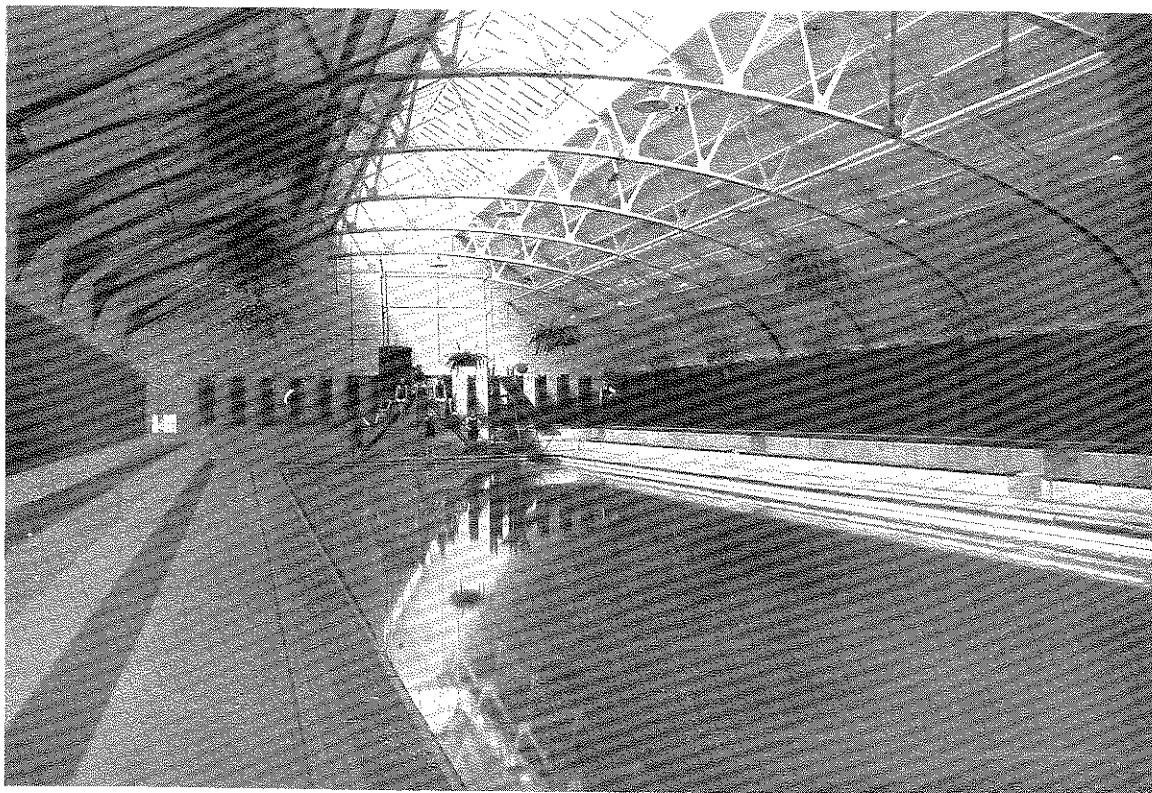
EXTERIOR

built for

The Rt. Hon. T. R. FERENS, P.C., J.P.

at

Messrs. Reckitt & Sons, Ltd., Works, Hull



Architects

GELDER & KITCHEN, F.F.R.I.B.A.

SWIMMING BATHS INTERIOR

Patent Stone supplied by The Hull Concrete Stone Co., Ltd.



Architects

FREEMAN SON & GASKELL, F.R.I.B.A.

STORES

built for

THE DANISH BACON & CO-OPERATING TRADING CO., LTD.

Sub-Contractors :

Steelwork	W. Banks & Co., Ltd.
Slating	Dawber, Townsley & Co., Ltd.
Plastering	F. H. Steele
Cement	G. & T. Earle, Ltd.
Bricks	John Frank & Sons



Architects

GELDER & KITCHEN F.F.R.I.B.A.

SHOP PREMISES

built for

Messrs. WM. JACKSON & SON, LTD., Newland, Hull

Sub-Contractors :

Ironfounders	J. Shewell & Co.'s Successors, Ltd.
Slating Dawber, Townsley & Co., Ltd.
Cement G. & T. Earle, Ltd.
Bricks John Frank & Sons

SHOP PREMISES
 JAMESON STREET, HULL
for
 FRANK PLUMMER, Esq.

Sub-Contractors :

Joinery	J. Taylor & Son
Slating	Dawber, Townsley & Co., Ltd.
Cement	G. & T. Earle, Ltd.



Architects

GELDER & KITCHEN, F.F.R.I.B.A.



Architects

GELDER & KITCHEN, F.F.R.I.B.A.



Architects

GELDER & KITCHEN, F.F.R.I.B.A.

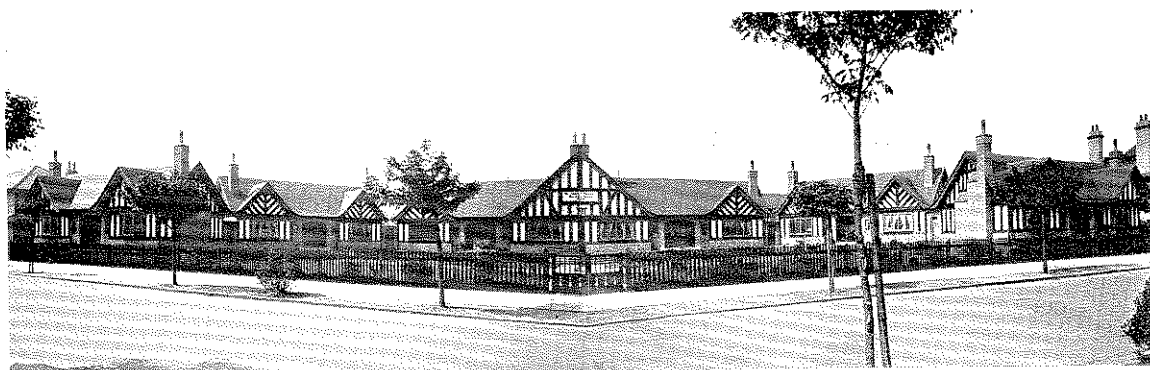
SHOP PREMISES, BOND STREET, HULL

built for

Messrs. EDWIN DAVIS & CO., LTD.

Sub-Contractors :

Slating T. J. Chapman & Son, Ltd.



Architect

F. RUNTON WALLER, L.R.I.B.A.

SIR JAMES RECKITT'S REST HOMES GARDEN VILLAGE, HULL

JAMES DARBY LIMITED

LEAD, GLASS & PAINT WORKS

IMPORTERS

Established nearly 100 years

EXPORTERS

WE HAVE EXTENSIVE STOCKS

BRITISH POLISHED PLATE
SILVERED PLATE
SHEET GLASS
ROUGH AND ROLLED PLATE
WIRED ROUGH, ROLLED, ARCTIC
WHITE FIGURED
TINTED FIGURED
PRISMATIC
WHITE HAMMERED CATHEDRAL
COLOURED SHEET
VITA GLASS—ULTRA-VIOLET RAYS
SHEET LEAD AND PIPE

IRON TUBES AND FITTINGS
BRASS WORK
BATHS, LAVATORIES
SINKS
COPPER CYLINDERS
GALVANIZED CYLINDERS & TANKS
RAINWATER PIPE
GUTTERS
SOIL PIPE
PUMPS
TIN, ZINC, SOLDER

Manufacturers of

“ECLIPSE” BRAND PAINTS VARNISHES, ENAMELS

COLOURS IN OIL, TURPS & WATER
GENUINE WHITE LEAD
DISTEMPER
LINSEED OILS
GENUINE AMERICAN TURPS
READY MIXED PAINTS
COPALGUM VARNISHES
WHITE AND COLOURED ENAMELS
RED AND ORANGE LEAD
CREOSOTE

PURE LINSEED OIL PUTTY
PURE BRISTLE BRUSHES
KALSOMINE WHITENERS
VARNISH BRUSHES
ENAMEL BRUSHES
PAINT BRUSHES
WALL BRUSHES
SASH TOOLS
DUSTERS
PAPERHANGERS' BRUSHES

Sundries a Speciality

Telephone:
Central 4910 (2 lines)

MILL STREET, HULL

Telegrams:
“Eclipse, Hull.”

Telephone: Cent. 1477.

T. J. CHAPMAN & SON, LTD.

STEEPLEJACKS

Slaters and Builders' Merchants
Slaters, Tilers and Roofing Contractors

SLATING

WITH WELSH, CORNISH, WEST-
MORELAND AND OTHER SLATES.

TILING

WITH STAFFORDSHIRE, FRENCH,
DUTCH AND OTHER TILES.

WE SPECIALISE IN ROOF AND CHIMNEY REPAIRS.

Clarendon Street, HULL.

Telephone Cent. 7499

*ALL CLASSES OF WORK EXECUTED IN
GRANITE, MARBLE OR STONE*

J. PEERS & SON *MASONRY CONTRACTORS*

94 ALEXANDRA ROAD
HULL

Monumental Branch: PEERS & WHITEHEAD, 224 SPRING BANK, HULL
Telephone Cent. 6948.

ELECTRICAL INSTALLATIONS

*For Lighting, Power, Heating
Use Electricity*

It is clean in use, most convenient for all purposes and is ever ready—just press a switch and you have light, power, or heat. No chance of fumes—or fire—or dirt. GET AN ESTIMATE FROM a firm who have given satisfaction on every job undertaken. We can supply you with the most elaborate fittings for your home, or those not so ornate and at less cost. In fact we have every kind of fitting in stock.

PORTE BROS. & CO. *ELECTRICAL CONTRACTORS*

Telephone Central 5966.

PRYME STREET, HULL

Central Telephone
5218

Established
1887

*Contractors to the Admiralty, War Office
and Air Ministry*

J. TAYLOR & SON
JOINERY CONTRACTORS
SHOP, BANK & OFFICE FITTERS
SANER STREET :: HULL

*SUB-CONTRACTORS IN MANY INSTANCES TO MESSRS. GEORGE HOULTON
AND SONS FOR WORKS ILLUSTRATED IN THIS BOOK*

W. L. HARRISON LTD.

*Modern Plumbers
and Electrical
Contractors*

30-31 GEORGE STREET, HULL

HENRY WILLIAMSON & Co. Ltd.

*Manufacturers of all kinds of Bricks, Roofing
Tiles, Ridges, Etc., Etc.*

MERCHANTS IN ALL CLASSES
OF BUILDING MATERIALS

PRACTICAL SLATERS
AND TILERS

Brick & Tile Works:

BROOMFLEET NEWPORT & FERRIBY SLUICE

QUEEN'S DOCK, HULL

Also at
GOOLE AND SELBY

Telephones:--HULL 4426-4427; GOOLE P.O. 68; SELBY P.O. 127.

Contractors to Admiralty, War Office
and Office of Works.

Telegrams:
"Humber Electric."

Telephone:
6958 Central.

THE HUMBER ELECTRICAL ENGINEERING CO.

45-46 PORTLAND PLACE, HULL

Dynamos Motors Switch Boards Ship Fittings

Specialities ;

SHIP AND TRAWLER INSTALLATIONS
POWER AND LIGHTING :: WORKS
COUNTRY HOUSES, ETC.

DYNAMO & MOTOR MANUFACTURERS
AND REPAIRERS

Repairs of every description

Estimates given

BRANCH OFFICE AND STORES :

1 Kent Street, GRIMSBY
Telephone 2485

158 Dock Street, FLEETWOOD
Telephone 374.

KING & COMPANY LIMITED

Established 1747

Architects' & Builders' Brassfounders
Builders' Ironmongers
Constructional Steelworkers
Electrical Engineers
Hardware Factors

Heating Engineers
Iron and Steel Merchants
Marble Masons & Polishers
Sheet Metal Workers
Ventilating Engineers

SCHEMES AND ESTIMATES FREE.

Holy Trinity Church Side, 28/30 Jameson St., HULL
and 37 Northgate, DARLINGTON

Phone : Central 4294 (Private Exchange).

THE STOURBRIDGE GLAZED BRICK & FIRECLAY Co., Ltd.

Manufacturers of
Unstainable Glazed Bricks in
White, Salt and Colours.
Unstainable Glazed Fireclay.
Wall Tiles, Patent Partition
Glazed Bricks, Lavatory
Basins, Closet Pans, Baths,
Urinal Stalls, Sinks, Light
Castings, Artistic Fireplaces,
and Hearth Tiles, Best Stour-
bridge Firebricks, Firebars
and Specials, Ground Fireclay.

Blowers Green, DUDLEY.

Telegrams :
" GLAZE DUDLEY."

Telephones :
2445 & 2446 DUDLEY.

Telephone : 4001 Y1.

F. H. STEELE CONTRACTOR *for* PLASTERING

**High-Class Plastering
and Fibrous Work.**



*Some recent jobs carried out as sub-contractor to
Messrs. Geo. Houlton & Sons :*

Operating Theatre, Hull Royal Infirmary.
Show Rooms, Asbestos Rubber Co., Hull.
Haworth Arms - - Worthington & Co.
Factory and Offices, Danish Bacon Co., Hull,
Messrs. Johnson & Sons, Showrooms,
Jameson St., Hull - Restoration of Messrs.
Ranks' Ltd. Offices, Hull, and Residences in
Hull and District.

35, Newland Avenue, HULL.

G. ULLIOTT & NEEDHAM

*Haulage Contractors
Sand and Gravel
Merchants*

HAULAGE BY PETROL
AND STEAM LORRIES
ANY DISTANCE

**41 WELLINGTON LANE
HULL**

Telephone Central 4423.

DRAPE & UPTON

*Contracting
Plumbers and Electricians*

Plumbing and Sanitary Work

in all its branches
carried out efficient-
ly and expeditiously
in town or country.
Distance no object.

*OWN MOTOR TRANSPORT
REPAIRS A SPECIALITY*

77 Welbeck Street, HULL

Telephone : Central 8151.

Hardman's Brilliant Black Varnish

WILL SAVE YOU POUNDS IN COSTS
AND POUNDS IN PRESERVATION

For all classes of Iron, Stone or Woodwork. A Brilliant Black Hard Finish. Lasting Results. Specify this on your next Job.

HARDMAC

A Scientific Preparation for laying Wood Block Floors.

AS TENACIOUS AS A BULLDOG.

E. HARDMAN, SON & Co., Ltd.

Telegrams: "Hardmans, Hull." Bedford St., Wilmington, HULL. Telephone: 4286-7.

THE NAME THAT STANDS FOR *QUALITY*
IN EVERY KIND OF ———— *TIMBER*—

J. A. HEWETSON & Co. Ltd.

HULL

Telephone Central 5330 (2 lines)

Telegrams: "Hewetson, Hull."

*SOFTWOODS,—HARDWOODS,—PLYWOODS,
MOULDINGS.—OAK, PITCH PINE AND MAPLE
FLOORING, AND EVERY OTHER VARIETY OF
PREPARED STOCK.*

Telephone: 5952.

Crans: "EXACTITUDE, HULL."

Robinson & Reily

Autocar Engineers and Agents

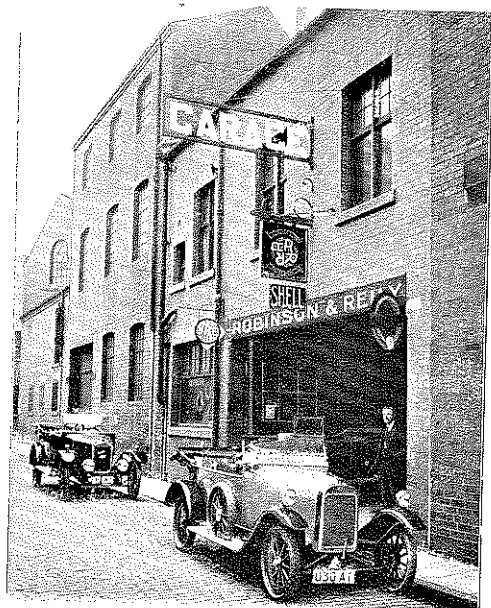
R.A.C.
Repairs.

TRUNDLE ST., HULL

Established
1909.

(Opposite F. J. Ross, Ltd.)

PRactical EXPERIENCE



PERSONAL SUPERVISION

Deferred Payments Arranged.
Distributors for: Aster, Arrol-Aster, Arrol-Johnston
and Galloway Cars.

Telephone 6476.

Sherburn & Greensides

(Proprietor: Arthur Sherburn)

BUILDERS' IRONMONGERS

Large Stocks
Tiled Surrounds, Interiors
Wood & Enamelled Slate
Mantel Pieces
Combination Grates
Ranges, etc.

Smeaton Street
and New Garden Street
HULL

Telephones: Office: Central 4654. Wharf: Central 33291.

James Barraclough

*Wharfinger, Keel, Sloop
and Lighter Owner.*

Forwarding Agent, Coal,
Sand and Gravel Merchant.
Brick and Tile Manufacturer.

Accommodation Wharf: WINCOLMLEE.

Northern Chambers, Queen Street,
HULL.

Private Address:
WESTHOLME, BARTON-ON-HUMBER.

Telegrams: "Barraclough, Westholme, Barton-on-Humber."

Telephone: 2 Barton-on-Humber.

Telephone: Central 33362.

R. ORWIN

*Joiner, Shop
AND
Office Fitter*



36, PLANE STREET,
HULL.

IRON and STEEL

ANGLES, JOISTS, BARS, PLATES
Cut to Sizes.

PIG IRON

ALL KINDS OF
SCRAP IRON & STEEL
Bought and Sold.

STOCKS HELD AT
Raven Street Ironyard & Sidings
DRYPOOL L.N.E.R.

C. A. HILL & Co.

Head Office : 58/60 KING EDWARD STREET,
HULL.

Telephones :
4801-4802.

Telegrams :
" Ferrum, Hull."

HENRY MEAD

AND CO., LIMITED

*Builders' and Road Stone
Merchants*

Sand, Gravel, Chips, Cement
Plaster and Lime always in
stock

Wharf:

Scott Street Bridge
LIME STREET, HULL

Registered Offices:

No. 3 Princes Dock Chambers
HULL

And at LONDON: 50 HEPWORTH RD., S.W. 16

J. W. DAVIS & SON (HULL) LIMITED.

First Coat Priming
Paint for Builders
A SPECIALITY.

Ochres and Oxides
for Cement Colouring.

PRICES AND SAMPLES
ON APPLICATION.

WILMINGTON, HULL.

*Telegrams: "Cocking, Walkeringham, Misterton,"
Telephone: Misterton 28.*

Cocking & Sons LIMITED BRICK & TILE WORKS

MANUFACTURERS OF

Red and White Bricks
Pan Tiles
Drain Pipes
etc.

Sand-Faced Bricks a
Speciality

WALKERINGHAM
DONCASTER

ART and ARCHITECTURE

WESTMINSTER ABBEY AND ITS ANCIENT ART.

By J. G. NOPPEN. Edition de Luxe. Crown 4to ($10\frac{1}{4} \times 7\frac{1}{2}$). Full cloth, stamped in real gold, 56 plates. Over 90 illustrations, 5 plans, glossary and copious index and with strong wrapper. One Guinea net. Postage 9d.

"The format is worthy of London's noblest spiritual monument."—*Spectator*.

ANCIENT COTSWOLD CHURCHES.

By ULRIC DAUBENY. An important original work describing 100 churches in a district where Norman work abounds and even Saxon evidences are plentiful. Crown 4to, cloth 25s. Postage 9d.

ETCHINGS AND AQUA ETCHINGS OF PUBLIC SCHOOLS.

Messrs. Ed. J. Burrow & Co., Ltd., publish a large series of Etchings and Aqua Etchings of the Great Public Schools. Prospectuses and a complete list of the Schools, which include Eton, Winchester, Harrow, Shrewsbury, Marlborough, Cheltenham, Oundle, Sedbergh, etc., etc., will be gladly sent on application.

HISTORIC AND PICTURESQUE INNS OF OLD ENGLAND.

By CHARLES G. HARPER. The author, who has made old inns a special study from both the historic and the artistic standpoint, is specially well qualified as a guide to these interesting survivals. The book deals with inns in general, monastic hostelries and pilgrims' inns, historic inns, Pickwickian and Dickensian inns, inns along the great roads, and inns of outstanding interest. Illustrated with forty-seven pen and ink drawings by the author and sixty-one other illustrations. Stiff boards, gold lettered, pictorial jacket. 3s. net; by post 3s. 6d.

BLACK JACKS AND LEATHER BOTTELS.

Being some account of Leather Drinking Vessels in England, and incidentally of other ancient vessels, by OLIVER BAKER. Royal 4to. Over 100 illustrations. Three coloured plates. Bound in full buckram. Stamped in gold, £3 3s. Postage 9d.

Monsieur J. J. Jusserand, the famous Author of "English Wayfaring Life in the Middle Ages," etc., etc., writing to the Author from the French Embassy at Washington, says: "My congratulations on the completion of your task. Your book will certainly prove a unique one; for, which is rare now-a-days, you have followed an untrodden path. The illustrations, which are of great beauty and interest, will still increase the value of the work."

COMPLETE CATALOGUE SENT FREE ON REQUEST.

Ed. J. Burrow & Co., Ltd., Cheltenham

LONDON: CENTRAL HOUSE, 43-45-47, KINGSWAY, W.C.2.

DUNN & APPELBE

Marine, Mechanical & Constructional Engineering

MANUFACTURERS OF

*Light Constructional Steelwork
Ornamental Ironwork
Fire Escape Staircases
Etc.*

4 CHARLES STREET, HULL

Agents for A. & P. Steven, Ltd., Lifts, Etc.

Telephone: Central 33176.

Telephone: Central 34106.

S. MOSS IRONFOUNDER

Manufacturer of all

IRON CASTINGS

required for

Engineers, Shipowners
Shipwrights, Shipbrokers
Builders, Contractors
Ironmongers, etc., etc.

EAGLE IRON WORKS
Bromley Street, Wincolmlee
HULL

Telephone No.: 2433.

J. Shewell & Co.'s Successors, LIMITED.

STRUCTURAL ENGINEERS

ALLAN STREET, ALBERT HALL,
DARLINGTON.

Makers of all kinds of Steel

Stanchions, Girders and Roof
Trusses for Public Works
Buildings and Workshops.

Specialities :

Steel Framed Buildings & Roofs.
— Pressed Steel Gutters —

DESIGNS AND ESTIMATES ON APPLICATION.

Telegraphic Address: "Bridge."

Warmsworth Lime

For 60 years now Lockwood's Lime, produced at Warmsworth Cliffs, near Doncaster, and Anston Quarry, near Sheffield, has been used all over the North of England. The fact that it is being used more to-day than ever it was is proof surely of its sterling qualities. It is unique, combining, as it does, the full hydraulic properties of the lias lime with the sand-carrying capacity and workability of the fat and chalk limes. Without exaggeration it is

**The Best and most Economical Building Lime
in England.**

It has been specified and used in the construction of many important buildings—to mention one or two—Lime Street Station Hotel, Liverpool; Manchester Royal Infirmary; Sheffield General Post Office; Robson's Cement Works; Hull Workhouse Infirmary.

Conisborough Bricks

These are produced from the uppermost shales of the coal measures, yielding a wide range of products justly famed for their durability, texture and colour. They include double-pressed Red Engineering and Facings, vari-coloured Rustic Facings, Moulded Shapes, Terra Cotta and Fire Bricks.

The Conisborough Rustic Facings are stocked in 2in. $2\frac{1}{2}$ in. and 3 in. courses. They combine a matt texture with a wealth and warmth of brindled colouring reminiscent of the old hand-made clamp burnt bricks, so distinctive of the best English brickwork.

Quite recently they have been specified for two churches in Lincolnshire, for the new Dewsbury Infirmary, for the Doncaster Royal Infirmary and numerous schools and buildings for the West Riding County Council. There is no building material more beautiful than brickwork of character and quiet distinction. It is useless carefully and strictly to specify the stone or brick to be used in walling unless an equal discrimination is exercised as to the bonding material to be used in the wall.

Specify:

Warmsworth Lime and Conisborough Bricks

Yorkshire Amalgamated Products

LIMITED

27 Waterdale, Doncaster

(Fourteen Works and Quarries producing all kinds of Building and Road Making Material)

Telephone Doncaster 1071 (3 lines)

Telegrams: "Refractory, Doncaster."